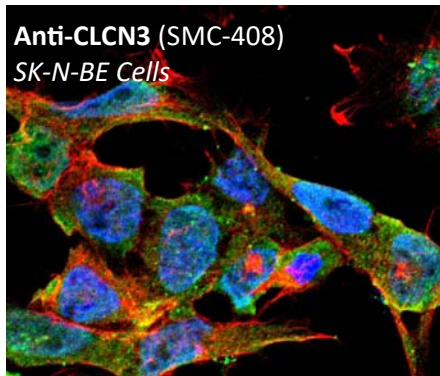


# Antibodies Transporters

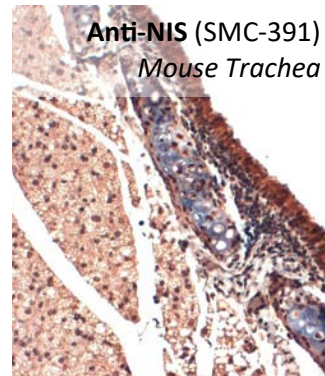


Antibodies • Proteins • Kits • Small Molecules

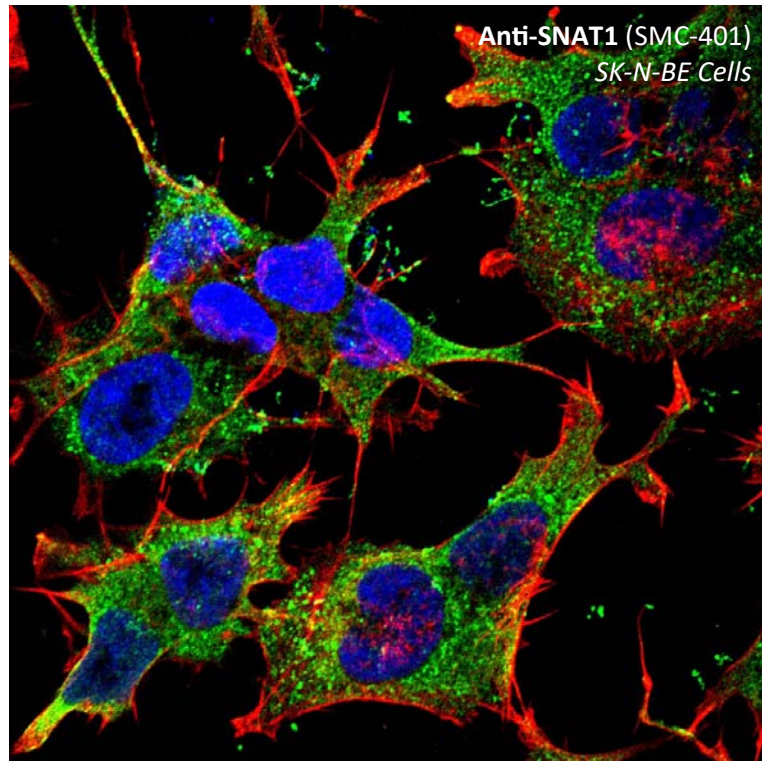
## Antiporter, Symporter, and Transporter Antibodies



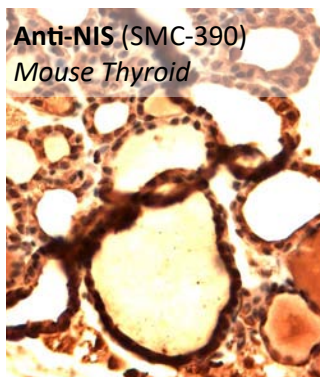
**Anti-CLCN3 (SMC-408)**  
SK-N-BE Cells



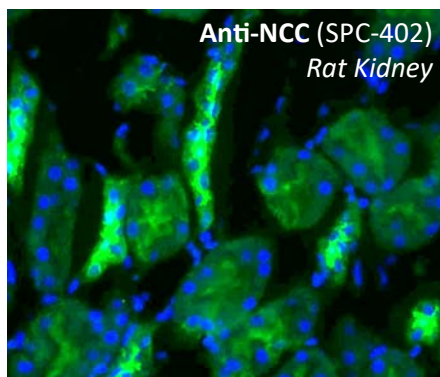
**Anti-NIS (SMC-391)**  
Mouse Trachea



**Anti-SNAT1 (SMC-401)**  
SK-N-BE Cells



**Anti-NIS (SMC-390)**  
Mouse Thyroid



**Anti-NCC (SPC-402)**  
Rat Kidney

Type	Target	Clone	Host	Applications	Species	Catalog	Size
Ion Antiporters	CLCN3	S258-5	Ms	WB, IHC, ICC/IF	Hu, Ms, Rt	SMC-408D	100µg
	NHE3	PAb	Rb	WB, ICC/IF	Ms, Rt	SPC-400D	100µg
Glutamine Transporters	SNAT1	S180-41	Ms	WB, IHC, ICC/IF	Hu, Ms, Rt	SMC-401D	100µg
	EAAC1	S104-32	Ms	WB, IP	Hu, Rt	SMC-406D	100µg
Neurotransmitter Transporters	VACHT	S6-38	Ms	WB, IHC	Hu, Ms, Rt	SMC-393D	100µg
	VGLUT1	S28-9	Ms	WB, IHC	Hu, Ms, Rt	SMC-394D	100µg
	VGLUT2	S29-29	Ms	WB, IHC	Ms, Rt	SMC-395D	100µg
	VGLUT3	S34-34	Ms	WB, IHC	Ms, Rt	SMC-397D	100µg
	KCC2	S1-12	Ms	WB, IHC, IP	Hu, Ms, Rt	SMC-392D	100µg
Ion Symporters	NCC	PAb	Rb	WB, IHC, ICC/IF, IEM	Hu, Ms, Rt, Dg	SPC-402D	100µg
	NIS	14F	Ms	WB, IHC, AM	Hu, Ms, Rt	SMC-390D	100µg
	NIS	FP5	Ms	WB, IHC, ICC/IF, AM	Hu, Ms, Rt	SMC-391D	100µg
	NKCC2	PAb	Rb	WB, IHC	Hu, Ms, Rt	SPC-401D	100µg
Urea Transporters	UT-A1	PAb	Rb	WB, ICC/IF	Ms, Rt	SPC-406D	100µg

Find out more: [www.stressmarq.com](http://www.stressmarq.com) | 1.250.294.9065 | [info@stressmarq.com](mailto:info@stressmarq.com) | StressMarq Biosciences Inc.

In ITALIA please contact: Vinci-Biochem - Tel +39 0571 568 147 - [vb@vincibiochem.it](mailto:vb@vincibiochem.it) - [www.vincibiochem.it](http://www.vincibiochem.it)