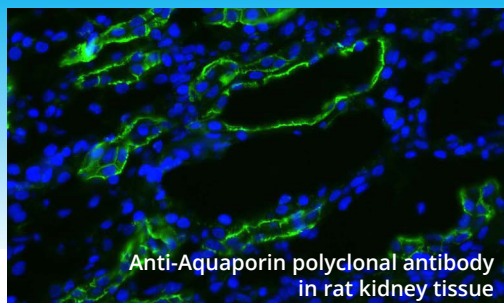
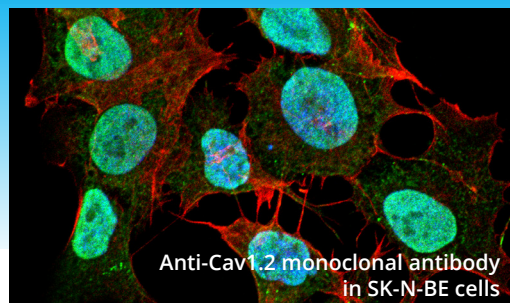


Ion Channel

Antibodies and Small Molecules



Antibodies

Target	Clone	Host	Applications	Reactivity	Catalog No.
Aquaporin 1	PAb	Rabbit	WB, IHC, ICC/IF	Hu, Ms, Rt	SPC-502
Aquaporin 2	PAb	Rabbit	WB, IHC, ICC/IF	Hu, Ms, Rt	SPC-503
Aquaporin 3	PAb	Rabbit	WB, IHC, ICC/IF	Hu, Ms, Rt	SPC-504
Aquaporin 4	PAb	Rabbit	WB, IHC, ICC/IF	Hu, Ms, Rt	SPC-505
ASIC1	N271/44	Mouse	WB, IHC, ICC/IF	Ms, Rt	SMC-427
ATP7B	N62/29	Mouse	WB, IHC, ICC/IF, IP	Hu, Ms, Rt	SMC-399
Cav Beta 2	N8B/1	Mouse	WB, IHC, ICC/IF, IP, AM	Hu, Ms, Rt	SMC-332
Cav1.2	N57/46	Mouse	WB, IHC, ICC/IF, IP, AM	Hu, Ms, Rt, Hm	SMC-300
Cav1.3	N48A/9	Mouse	WB, IHC, ICC/IF, IP, AM	Hu, Ms, Rt	SMC-301
Cav3.1	N178A/9	Mouse	WB, IHC, ICC/IF	Hu, Ms, Rt	SMC-405
Cav3.2	N55/10	Mouse	WB, IHC, ICC/IF, IP, AM	Hu, Ms, Rt	SMC-303
ENaC alpha	2G4	Mouse	WB, IHC	Ms, Rt	SMC-239
ENaC alpha	14E10	Mouse	WB, IHC	Ms, Rt	SMC-242
ENaC alpha	PAb	Rabbit	WB, IHC, ICC/IF	Rt, Ms, Xe	SPC-403
ENaC beta	PAb	Rabbit	WB, IHC, ICC/IF, IP	Hu, Ms, Rt, Xe, Hm	SPC-404
ENaC beta	7B8	Mouse	WB, IHC	Ms	SMC-240
ENaC beta	16E4	Mouse	WB	Ms	SMC-241
ENaC gamma	PAb	Rabbit	WB, IHC, ICC/IF	Rt, Ms, Xe, Hm, Hu	SPC-405
GABA A Receptor alpha 5	N415/24	Mouse	WB, IHC, ICC/IF	Hu, Ms, Rt	SMC-494
HCN1	N70/28	Mouse	WB, IHC, IP, AM	Hu, Ms, Rt	SMC-304
HCN2	N71/37	Mouse	WB, IHC, ICC/IF, IP, AM	Hu, Ms, Rt	SMC-305
HCN4	N114/10	Mouse	WB, IHC, ICC/IF, AM, FACS	Hu, Ms, Rt, Rb	SMC-320
KCNQ1	N37A/10	Mouse	WB, IHC, ICC/IF, IP, AM	Hu, Ms, Rt, Hm	SMC-307
KCNQ4	N43/6	Mouse	WB, IHC, ICC/IF, IP, AM	Hu, Ms, Rt	SMC-309

Ion Channel

Antibodies and Small Molecules

Antibodies

Target	Clone	Host	Applications	Reactivity	Catalog No.
Kir4.1	PAb	Rabbit	WB, ICC/IF	Hu, Rt	SPC-700
Kir6.1	N366/60	Mouse	WB, IHC, ICC/IF	Hu, Ms, Rt	SMC-491
NALCN	N187/7	Mouse	WB, ICC/IF	Hu, Ms, Rt	SMC-417
Nav1.7	N68/6	Mouse	WB, ICC/IF, IP, AM	Hu, Ms, Rt, Hm	SMC-314
Nav1.8	N134/12	Mouse	WB, IHC, ICC/IF, AM	Hu, Ms, Rt, Mk	SMC-342
NaVbeta3	N396/29	Mouse	WB, ICC/IF	Hu, Ms, Rt	SMC-490
NR2B	N59/36	Mouse	WB, IHC, ICC/IF, IP, AM	Hu, Ms, Rt	SMC-337
Slo2.2	N3/26	Mouse	WB, IHC, ICC/IF, AM	Hu, Ms, Rt	SMC-323
Stargazin	N245/36	Mouse	WB, ICC/IF	Hu, Ms, Rt	SMC-422
TASK1	N374/48	Mouse	WB, IHC, ICC/IF	Hu, Ms, Rt	SMC-473
TRPC5	N67-15	Mouse	WB, IHC, IP, AM	Hu, Ms, Rt	SMC-344
TRPC7	N64A-36	Mouse	WB, IHC, ICC/IF, IP, AM	Hu, Ms, Rt	SMC-343
TRPM7	N74/25	Mouse	WB, IHC, ICC/IF, AM	Hu, Ms, Rt	SMC-316
TRPV3	N15/4	Mouse	WB, IHC, ICC/IF, IP, AM	Hu, Ms, Rt	SMC-319
TRPV3	N15/39	Mouse	WB, IHC, ICC/IF, IP, AM	Hu, Ms, Rt	SMC-334
VDAC1	N152B-23	Mouse	WB, IHC, ICC/IF	Hu, Ms, Rt	SMC-456

Small Molecules

Product	Description	Molecular Formula	CAS No.	Catalog No.
Amlodipine	L-type Ca channel blocker	$C_{20}H_{25}ClN_2O_5 \cdot C_6H_5SO_3H$	111470-99-6	SIH-315
Diazoxide	K-ATP channel activator	$C_8H_7ClN_2O_2S$	364-98-7	SIH-548
Dofetilide	Herg channel blocker	$C_{19}H_{27}N_3O_5S_2$	115256-11-6	SIH-311
E-4031	Herg channel blocker	$C_{21}H_{27}N_3O_3S \cdot 2HCl \cdot 2N_2O$	113558-89-7	SIH-317
Felodipine	L-type Ca channel blocker	$C_{18}H_{19}Cl_2NO_4$	72509-76-3	SIH-323
Flupirtine maleate	Kv7 channel activator	$C_{15}H_{17}FN_4O_2 \cdot C_4H_4O_4$	75507-68-5	SIH-376
Isradipine	L-type Ca channel blocker	$C_{19}H_{21}N_3O_5$	75695-93-1	SIH-314
KB-R7943 mesylate	TRPC channel blocker	$C_{16}H_{17}N_3O_3S \cdot CH_3SO_3H$	182004-65-5	SIH-312
Minoxidil	K+ channel activator	$C_9H_{15}N_5O$	38304-91-5	SIH-318
Nicardipine HCl	L-type Ca channel blocker	$C_{26}H_{29}N_3O_6 \cdot HCl$	54527-84-3	SIH-313
Nifedipine	L-type Ca channel blocker	$C_{17}H_{18}N_2O_6$	21829-25-4	SIH-309
Nitrendipine	L-type Ca channel blocker	$C_{18}H_{20}N_2O_6$	39562-70-4	SIH-320
(R, S)-Niguldipine HCl	Ca ²⁺ channel blocker	$C_{36}H_{39}N_3O_6 \cdot HCl$	119934-51-9	SIH-319
Pinacidil Monohydrate	K+ channel activator	$C_{13}H_{19}N_5 \cdot H_2O$	85371-64-8	SIH-563
Verapamil HCl	L-type Ca channel blocker	$C_{27}H_{38}N_2O_4 \cdot HCl$	152-11-4	SIH-308

Distributed by:



In Italy: Vinci-Biochem Srl
 Contatto diretto: tel. 0571 568 147
 vb@vincibiochem.it
 www.vincibiochem.it