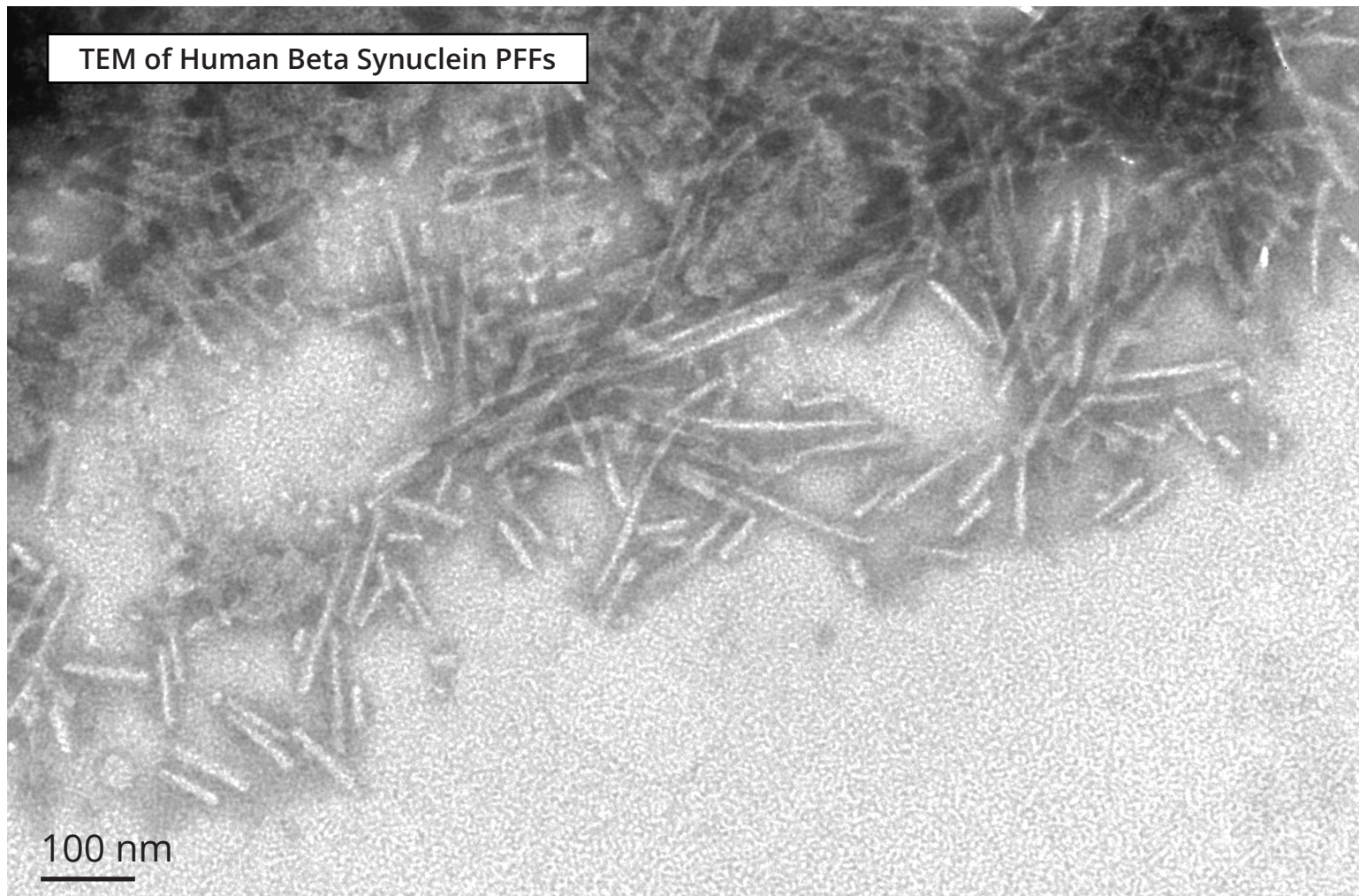


Beta Synuclein

Beta synuclein, like alpha synuclein, is found in pre-synaptic nerve terminals. It is believed to play a role in maintaining vesicular membrane curvature¹ and does not aggregate under physiological conditions.² WT beta synuclein inhibits the aggregation of alpha synuclein³ and mutant (V70M and P123H) beta synuclein has been associated with Dementia with Lewy Bodies (DLB).⁴

TEM of Human Beta Synuclein PFFs



Recombinant Beta Synuclein and Gamma Synuclein Proteins

Pre-formed Fibrils

Description	Catalog #
Human Beta Synuclein Pre-formed Fibrils	SPR-457
Human Gamma Synuclein Pre-formed Fibrils	SPR-459

Monomers

Description	Catalog #
Human Beta Synuclein Monomers	SPR-405
Human Gamma Synuclein Monomers	SPR-407

1. Westphal, C.H., Chandra, S.S. (2013). J Biol Chem. 288(3):1829-40.
2. Yamin, F. et al. (2005) Biochemistry. 44, 9096-9107.
3. Hashimoto, M. et al. (2001) Neuron. 32,213-223.
4. Ohtake, H. et al. (2004). Neurology. 63(5):805-11

Distributed by:



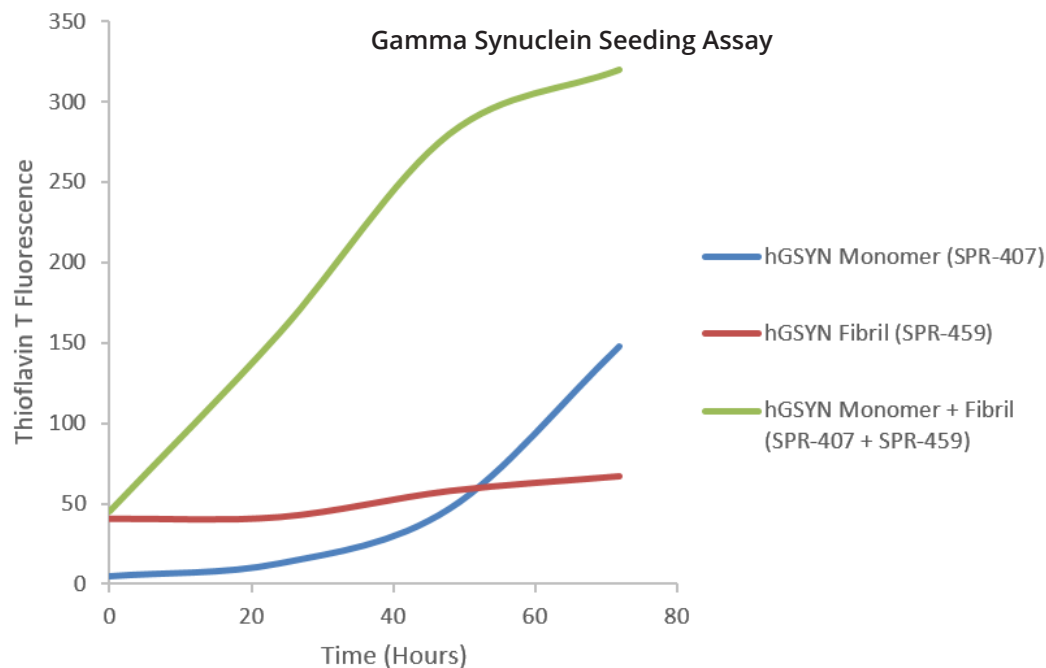
In Italy: Vinci-Biochem Srl
Contatto diretto: tel. 0571 568 147
vb@vincibiochem.it
www.vincibiochem.it

Find out more: www.stressmarq.com/PFFs | 1.250.294.9065 | info@stressmarq.com



Gamma Synuclein

Gamma synuclein is associated with neurodegenerative diseases as well as certain cancers. Human gamma synuclein PFFs and monomers are available from StressMarq. PFFs seed the fibrillization of monomers.



TEM of Human Gamma Synuclein PFFs

