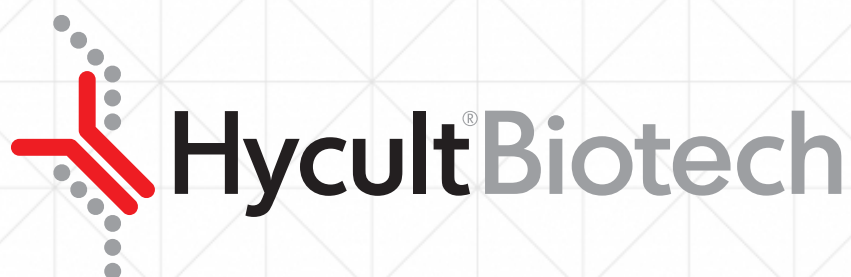




# TLR and inflammasome



bringing innate immunity to the **next level**

# TLR and Inflammasome

Hycult Biotech is a leading world-class manufacturer of research reagents in the field of innate immunity. We are a specialized partner in the development and manufacturing of assays, antibodies, proteins and peptides. With the focus on innate immunity, we pay special attention to products relating to antimicrobial peptides, complement, acute phase proteins, TLR, LPS and microbial toxins.

Toll like receptors (TLRs) are a class of non-catalytic receptors that function as pattern recognition receptors (PRRs). These receptors recognize pathogen-associated molecular patterns (PAMPs) that are shared by large groups of microorganisms, but also endogenous alarm signals, like apoptosis related membrane fragments and inflammatory ligands. Common cytoplasmic domains allow TLRs to use the same signaling molecules used by the interleukin-1 receptors (IL-1Rs), including MyD88 and TRIF. In man both intracellular and extracellular TLR exist. The intracellularly located TLR9 confers responses to bacterial DNA via species-specific CpG-motif recognition. Therefore, CpG-DNA can be used to investigate TLR9 response in various systems.

Validated ELISA kit sample types:

<b>BM:</b> Breast milk	<b>CS:</b> Cell culture supernatant
<b>P:</b> Plasma	<b>U:</b> Urine

ELISA kits			
Product name	Species	Sample types	Cat. #
sCD14	Human	BM CS P U	HK320

## Can't find the sample type you want for an ELISA kit?

Ask the support team to assist you with your research needs on [support@hycultbiotech.com](mailto:support@hycultbiotech.com)!

Validated antibody applications:

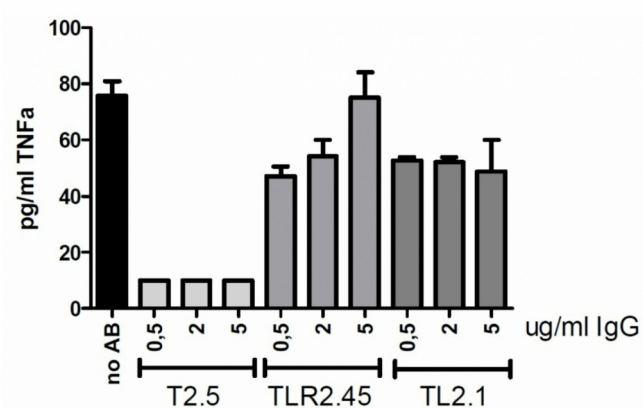
<b>F:</b> Frozen sections	<b>FC:</b> Flow cytometry
<b>FS:</b> Functional studies	<b>IA:</b> Immunoassay
<b>IF:</b> Immunofluorescence	<b>IP:</b> Immunoprecipitation
<b>P:</b> Paraffin sections	<b>W:</b> Western blot

## Want a conjugated antibody?

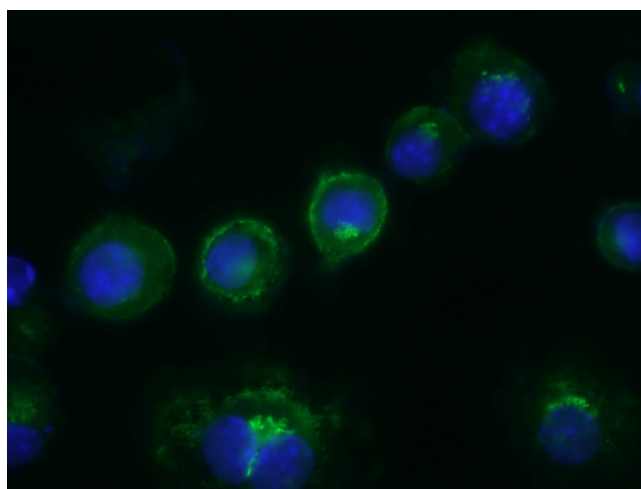
Please visit our website to find all available formats or contact us!

Antibodies				
Product name	Clone	Species	Applications	Cat. #
CD14	18D11	Human	FC FS IA	HM2224
CD14	Sa14-2	Mouse	FC FS IF IP W	HM1060
CD180	MHR73	Human	F FC FS IP P	HM2083
CD180	RP/14	Mouse	FC FS	HM1031
Mannose receptor	15-2	Human	F FC FS W	HM2056
Mannose receptor	MR5D3	Mouse	F FC FS IA IF IP W	HM1049
MD-1	MD113	Mouse	FC FS IF	HM1040
MD-2	18H10	Human	FC FS	HM2245
NOD1	2A10	Human	F IF IP W	HM2290
NOD2	hNOD2.017	Human	F IA IP P W	HM2291
sMD-2/TLR4	4H1	Human	FC FS IA IF W	HM2243
TLR1	GD2.F4	Human	F FC FS IA IF P	HM2085
TLR2	T2.5	Mouse/Human	F FC FS IA IF IP	HM1054
TLR2	TL2.1	Human	F FC FS IF IP P W	HM2064
TLR2	TL2.3	Human	F FC FS IA IP W	HM2066

Antibodies				
Product name	Clone	Species	Applications	Cat. #
TLR2	TLR2.45	Human	FC FS IF IP	HM2220
TLR2	6C2	Mouse	FC IF IP	HM1047
TLR2	mT2.4	Mouse	F FC FS IA P	HM1092
TLR2	mT2.7	Mouse	F FC IA IP P	HM1058
TLR2	pAb	Mouse	FC W	HP8016
TLR3	TLR3.7	Human	F FC FS IF IP P	HM2096
TLR4	3C3	Human	FC FS	HM2247
TLR4	4D9	Human	FC IA IP W	HM2298
TLR4	HTA125	Human	FC FS IA IF IP W	HM2068
TLR4/MD-2	7E3	Human	FC FS	HM2246
TLR4/MD-2	MTS510	Mouse	F FC FS IF IP	HM1029
TLR5	19D759.2	Human	F FC P W	HM2159
TLR6	TLR6.127	Human	FC FS IF IP P	HM2221
TLR7	pAb	Human	F FC IF IP P W	HP9040
TLR8	44C143	Human	FC P W	HM2160
TLR9	5G5	Human	F FC IF P W	HM2087
TLR9	5G5	Mouse	F FC IA P W	HM1042
TLR10	3C10C5	Human	FC IA	HM2302



Effect of TLR2 antibodies on TNF-production in a whole human blood model after stimulation with PAM3CSK4 (Cat. # HC4068)



CD14 in RAW 264.7 cells. Immunofluorescence with clone Sa14-2 (Cat. # HM1060)

TLR ligands			
Product name	Species / strain	Quantity	Cat. #
CpG DNA	Mouse	200 nmol	HC4033
CpG-A DNA (ODN 2216)	Human / Mouse	200 nmol	HC4037
CpG-B DNA	Rabbit	200 nmol	HC4038
CpG-B DNA	Rat	200 nmol	HC4040
CpG-B DNA (ODN 2006)	Human / Mouse	200 nmol	HC4039
CpG-C DNA (ODN 2395)	Human / Mouse	200 nmol	HC4041
Lipid A, Serotype R515 (Re)	E.coli	1 mg	HC4049
Lipid A, R595 (Re)	Salmonella minnesota	1 mg	HC4057
LPS, Serotype O55:B5	E.coli	1 mg	HC4045
LPS, Serotype EH100 (Ra)	E.coli	1 mg	HC4046
LPS, Serotype J5 (Rc)	E.coli	1 mg	HC4047
LPS, Serotype O8:K27	E.coli	1 mg	HC4065
LPS, Serotype R515 (Re)	E.coli	1 mg	HC4048
LPS, S-form	Salmonella abortus equi	1 mg	HC4061
LPS, S-form	Salmonella enteritidis	1 mg	HC4059
LPS, R345 (Rb)	Salmonella minnesota	1 mg	HC4053
LPS, R5 (Rc)	Salmonella minnesota	1 mg	HC4054
LPS, R595 (Re)	Salmonella minnesota	1 mg	HC4056
LPS, R60 (Ra)	Salmonella minnesota	1 mg	HC4052
LPS, R7 (Rd)	Salmonella minnesota	1 mg	HC4055
LPS, S-form	Salmonella minnesota	1 mg	HC4051
LPS, S-form	Salmonella typhimurium	1 mg	HC4060
MPL-A, R515 (Re)	E.coli	0.5 mg	HC4050
MPL-A, R595 (Re)	Salmonella minnesota	0.5 mg	HC4058
Non CpG-DNA	Human / Mouse	200 nmol	HC4034
Non CpG-DNA	Rabbit	200 nmol	HC4042
TLR2/TLR1 ligand	N/A	50 µg	HC4068
TLR2/TLR1 ligand control	N/A	50 µg	HC4069
TLR2/TLR6 ligand	N/A	50 µg	HC4070
TLR2/TLR6 ligand control	N/A	50 µg	HC4071
TLR3/MDA5 agonist	(POLY[I:C])	5 mg	HC4067
TLR4 agonist set: 4x LPS	E.coli	2x 0.5 mg and 2x 0.25 mg	HC4064
TLR4 agonist set: 4x LPS	Salmonella minnesota	2x 0.5 mg and 2x 0.25 mg	HC4063

## Need a custom formulation?

Ask us and we will advise you on the possibilities!

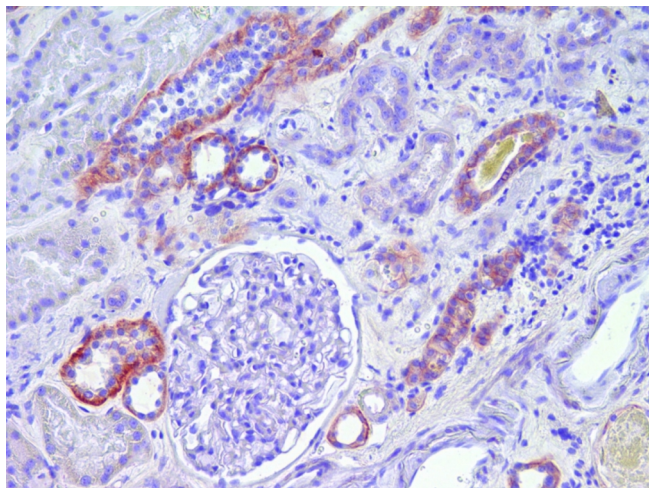
## Product in bulk quantity?

Contact us for a customized quotation!

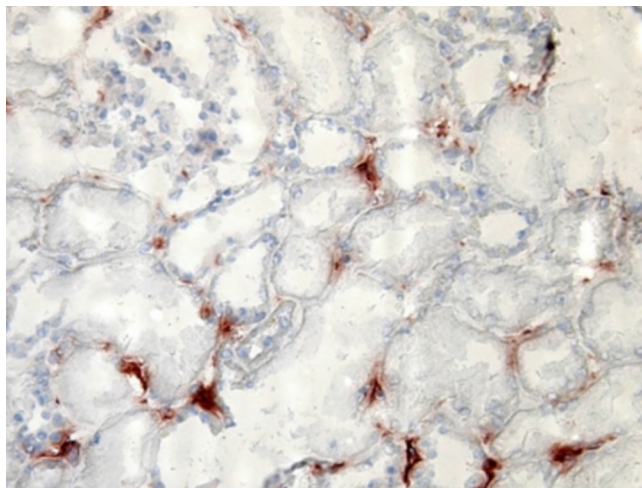
## Want to try different antibodies?

Use the sampler pack (Cat. # HM8999) to find the best antibody for your specific setup!

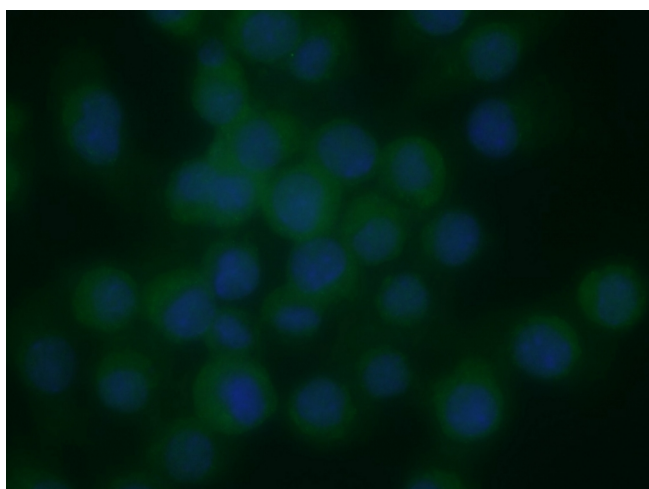




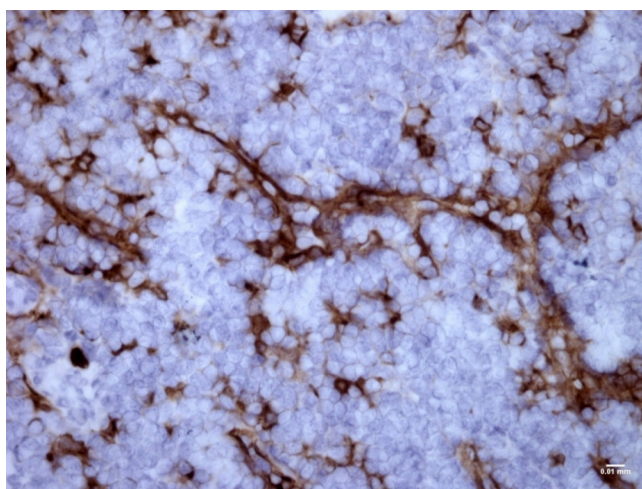
NOD-1 in human kidney. Staining of paraffin section with clone 2A10 (Cat. # HM2290)



TLR2 in human kidney. Staining of frozen section with clone TL2.1 (Cat. # HM2064)



TLR2 in RAW cells. Immunofluorescence with clone 6C2 (Cat. # HM1047)



Mannose receptor in mouse tonsil. Staining of frozen section with clone 15-2 (Cat. # HM2056)



## What we stand for

- |                                  |                         |
|----------------------------------|-------------------------|
| • Original manufacturer          | • Innate immunity focus |
| • > 20 years experience          | • Reliable and robust   |
| • Support within one working day | • Scientific drive      |

Hycult Biotech, bringing innate immunity to the **next level**



[www.hycultbiotech.com](http://www.hycultbiotech.com)

Hycult Biotech  
Frontstraat 2a  
5405 PB Uden  
The Netherlands  
T +31 (0)413 251335  
F +31 (0)413 248353  
E [info@hycultbiotech.com](mailto:info@hycultbiotech.com)

Hycult Biotech Inc.  
600 West Germantown Pike  
Suite 110, Plymouth Meeting  
PA 19462, USA  
T +1 855 2492858  
F +1 484 3683558  
E [orders-us@hycultbiotech.com](mailto:orders-us@hycultbiotech.com)

Hycult Biotech  
is distributed by:

In Italy:



Vinci-Biochem Srl  
Via Ponte di Bagnolo, 10 - Vinci (Fi)  
Tel. 0571 568 147 - [vb@vincibiochem.it](mailto:vb@vincibiochem.it)  
[www.vincibiochem.it](http://www.vincibiochem.it)