

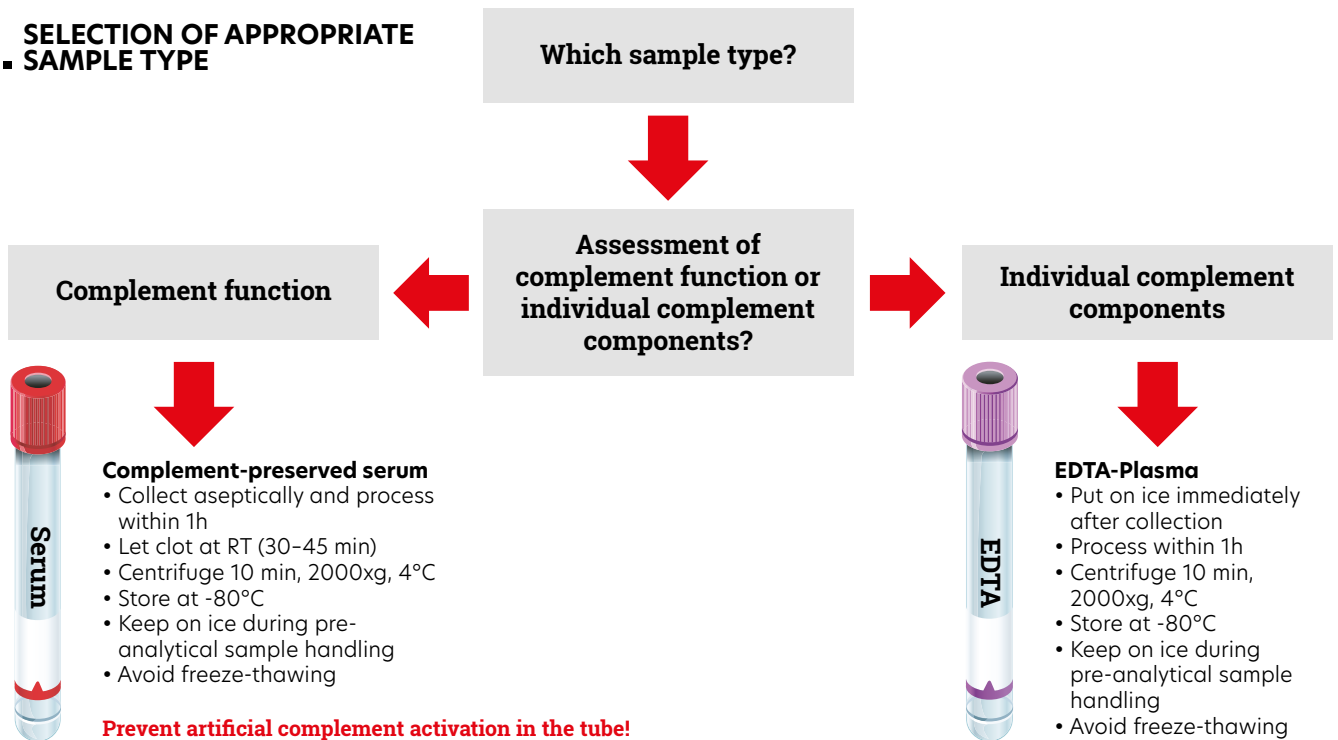
# Tools for complement research

Together, we improve health.

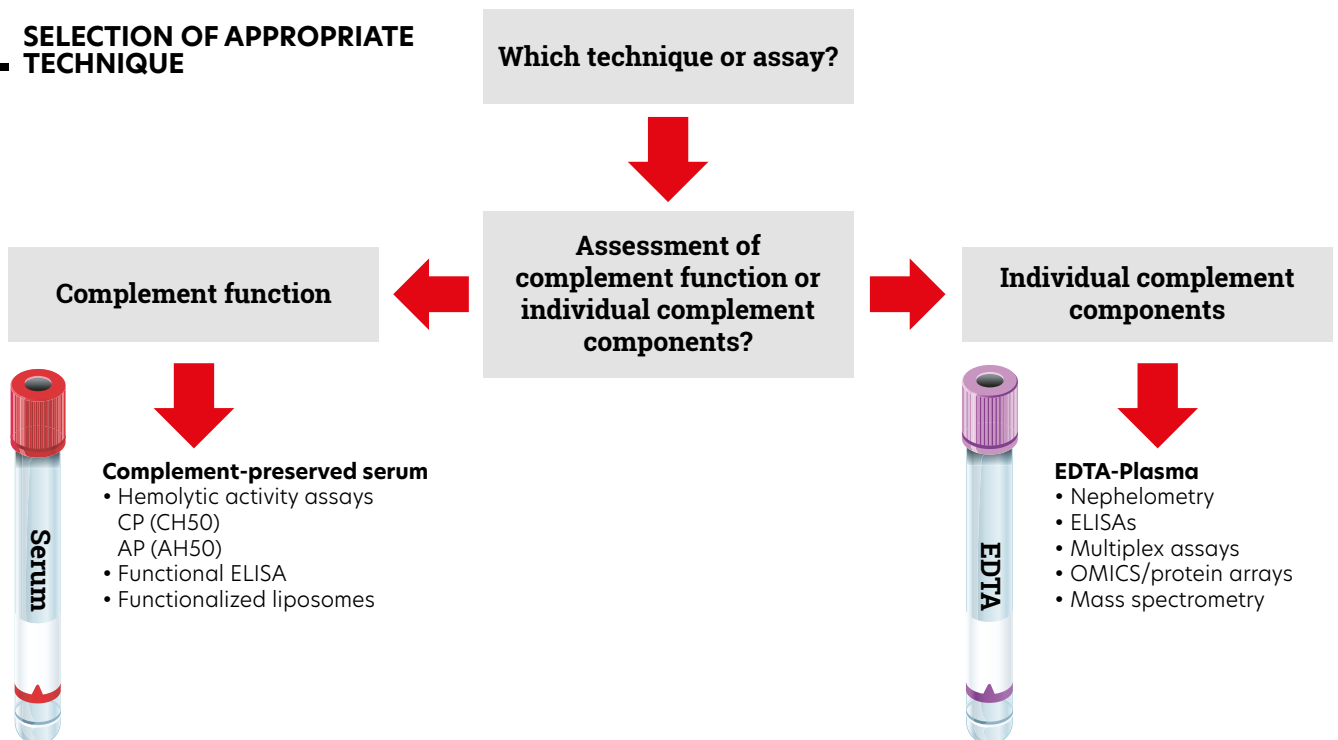
# Flowchart

Use the flowchart for the selection of: A) The appropriate sample type or  
B) The appropriate technique for the assessment of complement.

## A. SELECTION OF APPROPRIATE SAMPLE TYPE



## B. SELECTION OF APPROPRIATE TECHNIQUE



# General Introduction

As a leading developer and manufacturer of complement research tools, we take pride in our work. Our mission has always been to find answers to your questions and work towards improving health. We have been fulfilling this mission since 1994.

Our team possesses extensive expertise in the development and production of assays, antibodies, and proteins. We are committed to supporting scientists worldwide in their research on human diseases.

## Complement

The complement system is a crucial part of the immune system, consisting of a group of proteins that work together to defend the body against infections and support immune responses. It plays a pivotal role in recognizing and eliminating pathogens, promoting inflammation, and facilitating the removal of cellular debris.

Research on the complement system is vital for several reasons. Firstly, it helps in understanding its complex interactions with other components of the immune system, shedding light on the mechanisms behind immune responses. Secondly, studying the complement system aids in developing therapeutic strategies for various immune-related disorders and autoimmune diseases. Especially after the successful introduction of Eculizumab and C1-INH, more complement based therapeutics are approved for clinical trials or use.

Overall, comprehensive research on the complement system contributes to advancing immunology, paving the way for improved treatments and preventive measures for a wide range of health conditions.

**Let's improve health**

**Looking for other  
products related  
to complement?**

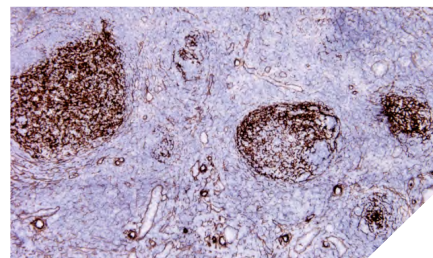
Visit our website  
[www.hycultbiotech.com](http://www.hycultbiotech.com)

Validated ELISA kit sample types:

<b>BF:</b>	Bronchoalveolar fluid (BAL)	<b>CF:</b>	Cerebrospinal fluid
<b>CS:</b>	Cell culture supernatant	<b>F:</b>	Feces
<b>O:</b>	Other	<b>P:</b>	Plasma
<b>S:</b>	Serum	<b>SA:</b>	Saliva
<b>SF:</b>	Synovial fluid	<b>SP:</b>	Sputum
<b>U:</b>	Urine	<b>TH:</b>	Tissue homogenate

ELISA kits for human		
Product name	Sample types	Cat. #
C1-INH	P S	<a href="#">HK396</a>
C1s/C1-INH	P S	<a href="#">HK399</a>
C1q	BF P S	<a href="#">HK356</a> *
C3	P S	<a href="#">HK366</a> *
C3a	BF P S U	<a href="#">HK354</a> *
C3c	P S	<a href="#">HK368</a>
C3d	P S	<a href="#">HK3017</a> *
C5	P S	<a href="#">HK390</a> *
C5a	S	<a href="#">HK349</a>
<b>C7</b>	<b>P S</b>	<b><a href="#">HK3029</a> NEW</b>
Collectin-10	P S	<a href="#">HK364</a>
Complement factor B	P S	<a href="#">HK367</a>
Complement factor D	P S U	<a href="#">HK343</a>
Complement factor H	P S U	<a href="#">HK342</a>
Complement factor I	P S U	<a href="#">HK355</a>
<b>Clusterin</b>	<b>P S</b>	<b><a href="#">HK3026</a> NEW</b>
Factor H, 402H/Y variant detection	P S	<a href="#">HK353</a>
<b>FHR-2</b>	<b>P S</b>	<b><a href="#">HK3004</a>* NEW</b>
<b>FHR-3</b>	<b>P S</b>	<b><a href="#">HK3005</a> NEW</b>
<b>FHR-4</b>	<b>P S</b>	<b><a href="#">HK3006</a>* NEW</b>
<b>FHR-5</b>	<b>P S</b>	<b><a href="#">HK3007</a> NEW</b>
Ficolin-2	CS P S	<a href="#">HK336</a>
Ficolin-3	CS P S	<a href="#">HK340</a>
gC1qR	P	<a href="#">HK362</a>
Human Alternative Pathway	S	<a href="#">HK3012</a> *
Human Classical Pathway	S	<a href="#">HK3010</a> *
MASP-1/C1-INH	P S	<a href="#">HK3001</a>
MASP-2	CS P S	<a href="#">HK326</a> *
MBL	CS P S	<a href="#">HK323</a> *
Properdin	BF CF P S U	<a href="#">HK334</a> *
sCD59	P S	<a href="#">HK374</a>
TCC	CF CS P SF U	<a href="#">HK328</a> *

\*Cross reactive with non-human primates



C4d in human tonsil. Staining of frozen section with clone 12D11 (Cat. # HM2229)

**Looking for other products related to complement?**

Visit our website  
[www.hycultbiotech.com](http://www.hycultbiotech.com)

ELISA kits for mouse, rat and pig		
Product name	Sample types	Cat. #
Mouse C1q	P S	<a href="#">HK211</a>
Mouse C3	P S	<a href="#">HK2002</a>
Mouse C3b	P S	<a href="#">HK216</a>
Mouse C4	P	<a href="#">HK217</a>
Mouse Alternative pathway	S	<a href="#">HIT422</a>
Mouse Classical pathway	S	<a href="#">HIT420</a>
Mouse Lectin pathway	S	<a href="#">HIT421</a>
Mouse Complement pathway (collection)	S	<a href="#">HIT423</a>
Pig Alternative pathway	S	<a href="#">HIT432</a>
Pig Classical pathway	S	<a href="#">HIT430</a>
Pig Lectin pathway	S	<a href="#">HIT431</a>
Pig Complement pathway (collection)	S	<a href="#">HIT433</a>
Rat Alternative pathway	S	<a href="#">HIT412</a>
Rat Classical pathway	S	<a href="#">HIT410</a>
Rat Lectin pathway	S	<a href="#">HIT411</a>
Rat Complement pathway (collection)	S	<a href="#">HIT413</a>
Rat TCC	P S	<a href="#">HK106</a>

## Can't find the sample type you want for an ELISA kit?

Ask the support team to assist you with your research needs on [support@hycultbiotech.com](mailto:support@hycultbiotech.com)

Validated antibody applications:

<b>F:</b> Frozen sections	<b>FC:</b> Flow cytometry
<b>FS:</b> Functional studies	<b>IA:</b> Immunoassay
<b>IF</b> Immunofluorescence	<b>IP:</b> Immunoprecipitation
<b>P:</b> Paraffin sections	<b>W:</b> Western blot

## Want to try antibodies?

Several quantities available, see website. Antibodies can also be purchased at 20 µg vial sizes.

Antibodies to human			
Product name	Clone	Applications	Cat. #
Activated C1s	M241	F FC FS IA IP P W	<a href="#">HM2109</a>
Activated C3	bH6	F IA	<a href="#">HM2168</a>
Activated C3	I3/15	IA W	<a href="#">HM2257</a>
C1-INH	15/12	IA W	<a href="#">HM2411</a>
C1q	JL-1	F FS IA IF W	<a href="#">HM2382</a>
C1s	M81	F FC FS IA IP P W	<a href="#">HM2108</a>
C1s	10/12	FS IA W	<a href="#">HM2412</a>
C3 (beta-chain)	169.5	W	<a href="#">HM2377</a>
C3/C3a	2898	IA W	<a href="#">HM2075</a>
C3/C3a	474	IA W	<a href="#">HM2073</a>
C3/C3b	755	IA W	<a href="#">HM2072</a>
C3/C3b/iC3b (alpha-chain)	18.1	IA W	<a href="#">HM2389</a>
C3/C3b/iC3b/C3c	C3-16.4	FS IA	<a href="#">HM2401</a>
C3a/C3a des Arg	2991	IA W	<a href="#">HM2074</a>
C3aR	17	F FC	<a href="#">HM2195</a>
C3b/iC3b	3E7	FC FS IF	<a href="#">HM2286</a>

Antibodies to human			
Product name	Clone	Applications	Cat. #
C3b/iC3b	5G9	FS	<a href="#">HM2285</a>
C3b/iC3b/C3d	1H8	FC IP W	<a href="#">HM2287</a>
C3b/iC3b/C3c	C3-42.3	FS IA W	<a href="#">HM2394</a>
iC3b/C3dg/C3d	C3-122	IA W	<a href="#">HM2395</a>
C3c	4	IP	<a href="#">HM2200</a>
C3c	F1-4	F IA IP W	<a href="#">HM2318</a>
C3d	HB2C2	IA IP W	<a href="#">HM2422</a>
C3d	3	IA IP W	<a href="#">HM2198</a>
C3g	9	IA IP	<a href="#">HM2199</a>
C4c	99-72-18	IA IP W	<a href="#">HM2399</a>
C4d	12D11	F FC IA W	<a href="#">HM2229</a>
C4d	7H4	F IA W	<a href="#">HM2230</a>
C5	10B6	FS IA W	<a href="#">HM2414</a>
C5/C5a	557	FS IA W	<a href="#">HM2077</a>
C5/C5a	561	FS IA	<a href="#">HM2076</a>
C5/C5b	568	IA W	<a href="#">HM2080</a>
C5a/C5a des Arg	2942	F FS IA W	<a href="#">HM2078</a>
C5a/C5a des Arg	2952	F FS IA P W	<a href="#">HM2079</a>
C5aR	S5/1	FC FS P W	<a href="#">HM2094</a>
C5aR	W17/1	F FC P	<a href="#">HM2095</a>
C5L2	pAb	F FC IF W	<a href="#">HP9036</a>
C6	WU6-4	FC FS IA IF IP P W	<a href="#">HM2276</a>
C7	HB2H	IA W	<a href="#">HM2421</a>
C7	HB10G	IA W	<a href="#">HM2425</a>
C7	HB10H	IA W	<a href="#">HM2426</a>
C7	WU4-15	FC IA IF IP W	<a href="#">HM2277</a>
C9	X197	F FC FS IA P W	<a href="#">HM2111</a>
C9 neoantigen	WU13-15	F FC IA IF P W	<a href="#">HM2264</a>
CD11b	Bear-1	F FC IP	<a href="#">HM2125</a>
CD46	M177	F FC FS IA IP W	<a href="#">HM2103</a>
CD55	1C6	FC FS IA W	<a href="#">HM2280</a>
CD55	D17	FC W	<a href="#">HM2105</a>
CD59	MEM-43	FC IP P W	<a href="#">HM2120</a>
Clusterin	2D5	IA W	<a href="#">HM2435</a>
Clusterin	4C7	IA W	<a href="#">HM2436</a>
Collectin-10	4F9D7	IA W	<a href="#">HM2356</a>
Complement factor B/Bb	M13/12	IA IP W	<a href="#">HM2256</a>
Complement factor B/Ba	M20/6	IA IP W	<a href="#">HM2255</a>
Complement factor B/Ba	P21/15	IA IP W	<a href="#">HM2254</a>
Complement factor Ba neo-epitope	D22/3	IA W	<a href="#">HM2379</a>

Antibodies to human			
Product name	Clone	Applications	Cat. #
Complement factor D	D10/4	IA	<a href="#">HM2258</a>
Complement factor D	I8/1	IA	<a href="#">HM2259</a>
Complement factor H	C18/3	IA W	<a href="#">HM2248</a>
Complement factor H	L20/3	IA W	<a href="#">HM2249</a>
Complement factor I	1C11	IA W	<a href="#">HM2320</a>
Complement factor I	MBI-1	IA W	<a href="#">HM2319</a>
FHR2	2.12	W	<a href="#">HM2433</a>
FHR3	3.11	W	<a href="#">HM2427</a>
FHR4	4A.8	W	<a href="#">HM2438</a>
FHR4	pAb	IA W	<a href="#">HP9058</a>
FHR5	5.1	W	<a href="#">HM2430</a>
Ficolin-1	7G1	FC IA W	<a href="#">HM2196</a>
Ficolin-2	GN4	F IA IP	<a href="#">HM2090</a>
Ficolin-2	GN5	F IA IP W	<a href="#">HM2091</a>
Ficolin-3	4H5	F IA IP	<a href="#">HM2089</a>
gC1qR	60.11	FC FS IA IP P W	<a href="#">HM2014</a>
gC1qR	74.5.2	FC FS IA IF IP W	<a href="#">HM2015</a>
MAP44	2D5B6	IA IP P W	<a href="#">HM2296</a>
MASP-1	4H2A9	IA	<a href="#">HM2297</a>
MASP-1	3/3	IA W	<a href="#">HM2408</a>
MASP-1	100/10	IA W	<a href="#">HM2409</a>
MASP-1/3	1E2	IA IP W	<a href="#">HM2092</a>
MASP-1/3	2B11	IA IP W	<a href="#">HM2093</a>
MASP-2	8B5	IA W	<a href="#">HM2190</a>
MASP-2/MAP19	6G12	IA W	<a href="#">HM2191</a>
MASP-3	38:12-3	IA W	<a href="#">HM2216</a>
MBL	3E7	FC FS IA	<a href="#">HM2061</a>
Pro SP-C	pAb	F P W	<a href="#">HP9050</a>
Properdin	1G6D2	FS IA W	<a href="#">HM2354</a>
Properdin	2.9	IA	<a href="#">HM2282</a>
Properdin	3A3E1	FS IA W	<a href="#">HM2355</a>
Properdin	SIM 295-9.4.3	F FC IA W	<a href="#">HM2283</a>
SP-B	pAb	F P IA W	<a href="#">HP9049</a>
TCC	αE11	FC FS IA IF P	<a href="#">HM2167</a>



Antibodies to Mouse			
Product name	Clone	Applications	Cat. #
C1q	7H8	F IA IF	<a href="#">HM1044</a>
C1q	JL-1	F FS IA IF W	<a href="#">HM1096</a>
C3	11H9	FC F IA IF W	<a href="#">HM1045</a>
C3	pAb	F IF P W	<a href="#">HP8012</a>
C3a	3/11	FC FS IA W	<a href="#">HM1072</a>
C3aR	14D4	F FC	<a href="#">HM1123</a>
C3b/iC3b/C3c	2/11	F FC FS IA IF W	<a href="#">HM1065</a>
C3b/iC3b/C3c	3/26	F FC FS IA IF W	<a href="#">HM1078</a>
C4	16D2	F FC IA IF IP W	<a href="#">HM1046</a>
C4d	pAb	F FC P W	<a href="#">HP8033</a>
C5	BB5.1	F FS IA IF IP P	<a href="#">HM1073</a>
C5	pAb	W	<a href="#">HP8013</a>
C5aR	10/92	F FC W	<a href="#">HM1077</a>
C5aR	20/70	FC FS IF	<a href="#">HM1076</a>
C5L2	pAb	FS FC	<a href="#">HP8015</a>
C6	pAb	F W	<a href="#">HP8014</a>
C9	C9-6-25-5	W	<a href="#">HM1134</a>
CD46	MM10	F FC IA IF W	<a href="#">HM1118</a>
CD55	3D5	FC IA P W	<a href="#">HM1115</a>
CD59a	7A6	F FC FS IA IF W	<a href="#">HM1116</a>
CR1/CR2	7E9	FC IF IP W	<a href="#">HM1112</a>
Crry/p65	8A/E6	IA IF W	<a href="#">HM1117</a>
Factor H	1A2	F IA W	<a href="#">HM1119</a>
MBL-A	2B4	IA W	<a href="#">HM1036</a>
MBL-A	8G6	F IA IF W	<a href="#">HM1035</a>
MBL-C	14D12	F IA IF W	<a href="#">HM1038</a>
MBL-C	16A8	IA W	<a href="#">HM1037</a>
Properdin	E12	FS IA W	<a href="#">HM1138</a>
Properdin	H4	FS IA IF W	<a href="#">HM1139</a>
<b>TCC</b>	<b>12C3</b>	<b>F IA</b>	<b><a href="#">HM1153</a> NEW</b>

## Need a custom formulation?

Ask us and we will advise you on the possibilities.

## Want a conjugated antibody?

Visit our website to see all available formats.

## Product in bulk quantity?

Contact us for a customized quotation.

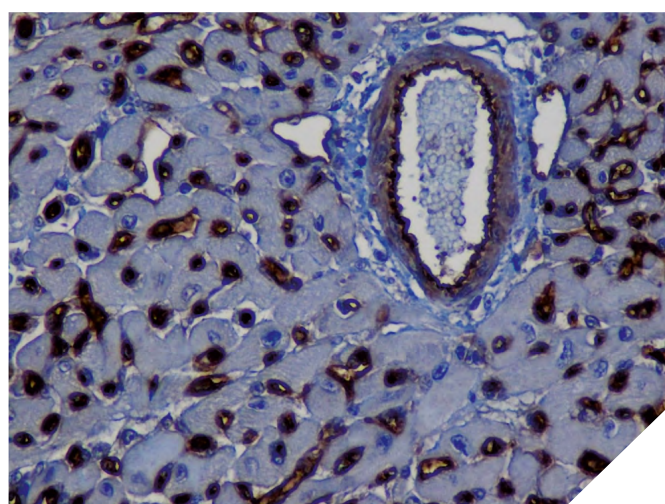


Antibodies to Rat			
Product name	Clone	Applications	Cat. #
C1q	pAb	F IA IP	<a href="#">HP8021</a>
C3	pAb	IA W	<a href="#">HP8022</a>
C3/C3b	2B10B9B2	IA W	<a href="#">HM3031</a>
C3aR	74	F FC	<a href="#">HM3028</a>
C4	pAb	IA IP	<a href="#">HP8023</a>
C4d	pAb	F FC P W	<a href="#">HP8034</a>
C5	4G2	FS IA W	<a href="#">HM3044</a>
C5aR	R63	F FC IF IA W	<a href="#">HM3017</a>
C5b-9	2A1	F FC IA IF P	<a href="#">HM3033</a>
C5L2	pAb	FC FS	<a href="#">HP8018</a>
C6	3G11	F IA IF W	<a href="#">HM3034</a>
CD46	MM1	F IA IF W	<a href="#">HM3038</a>
CD59 Glycoprotein	TH9	F FC FS W	<a href="#">HM3037</a>
Crry	TLD-1C11	F FC FS IA IF W	<a href="#">HM3032</a>
CD55	RDII-24	F FC FS IA W	<a href="#">HM3036</a>
CD55	RDIII-7	F FC FS IF W	<a href="#">HM3035</a>
SP-D	IIIH3	IA P W	<a href="#">HM3022</a>
SP-D	IVG8	IA P W	<a href="#">HM3024</a>
SP-D	VIF9	IA P W	<a href="#">HM3023</a>

Antibodies to Pig			
Product name	Clone	Applications	Cat. #
C3	pAb	FC	<a href="#">HP7003</a>
CD55	PD2	FC IA W	<a href="#">HM4014</a>
SP-B	pAb	IA W	<a href="#">HP7002</a>

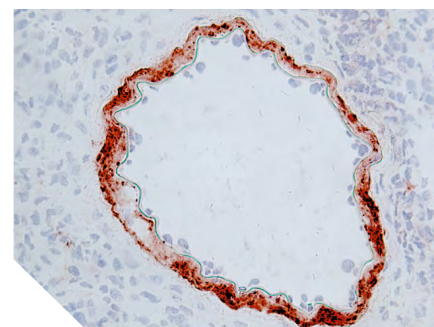


C5 in human brain tissue. Staining of frozen section with clone BB5.1 (Cat. # HM1073)

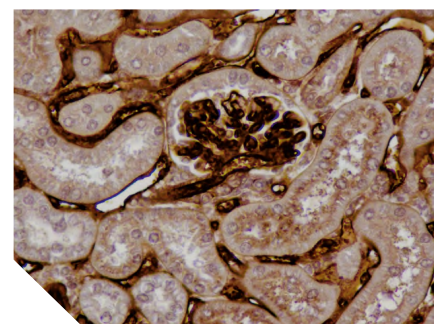


C4d in mouse heart tissue. Staining of paraffin section with polyclonal antibody (Cat. # HP8033)

Human proteins and peptides			
Product name	Species	Quantity	Cat.#
C1q, Natural	Human	1 mg	<a href="#">HC2143</a>
C3, Natural	Human	250 µg	<a href="#">HC2125</a>
C3a, Natural	Human	50 µg	<a href="#">HC2126</a>
C5a, Recombinant	Human	50 µg	<a href="#">HC2101</a>
C5a, Recombinant	Mouse	50 µg	<a href="#">HC1101</a>
C5a des Arg, Recombinant	Human	50 µg	<a href="#">HC2102</a>
C5a des Arg, Recombinant	Mouse	50 µg	<a href="#">HC1102</a>
C9, Natural	Human	250 µg	<a href="#">HC2142</a>
Cobra Venom Factor, Recombinant		50 µg	<a href="#">HC4073</a>
Complement factor H, Natural	Human	250 µg	<a href="#">HC2130</a>



C6 in rat kidney tissue. Staining of frozen section with clone 3G11 (Cat. # HM3034)

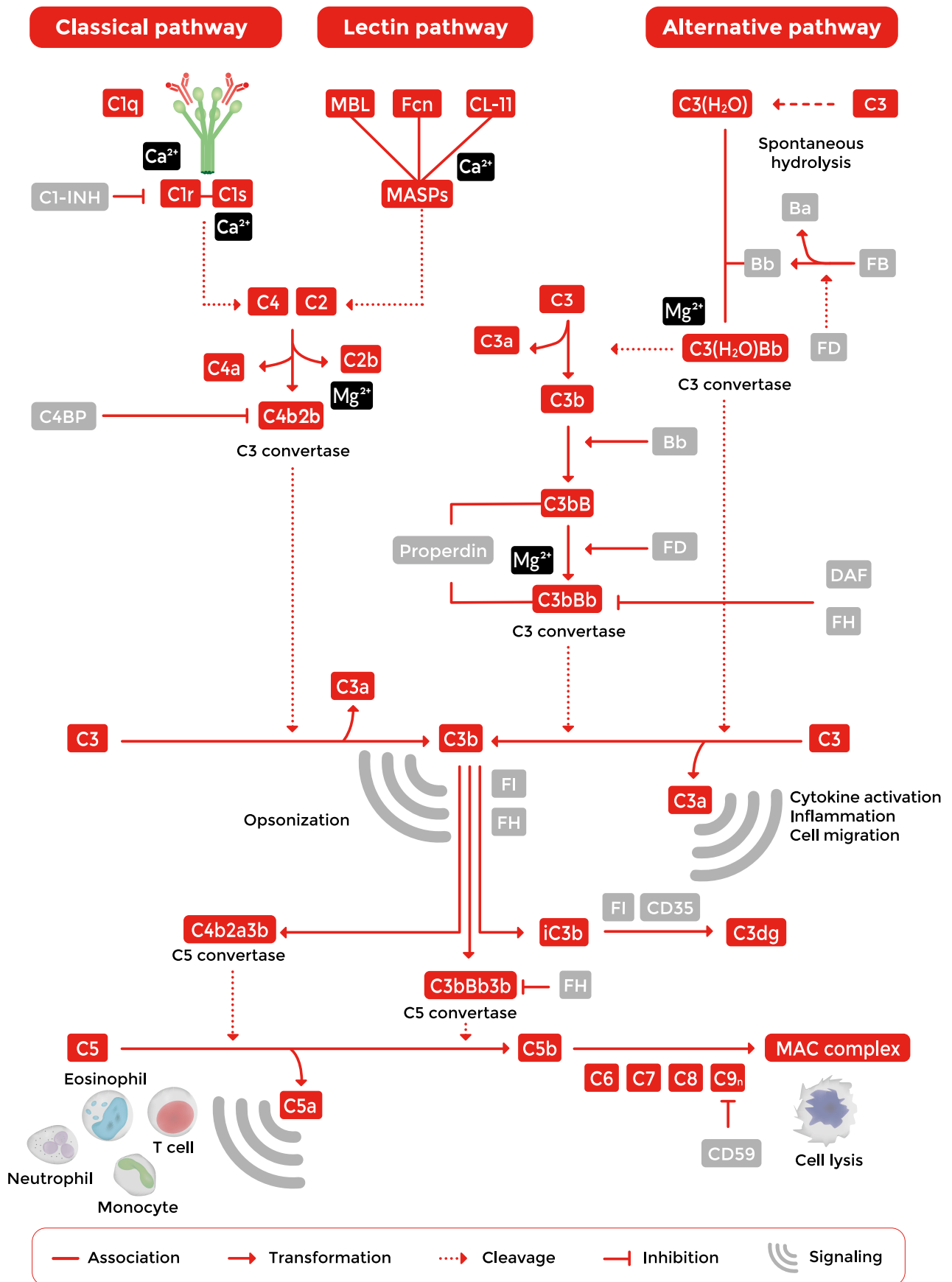


C4d in mouse kidney tissue. Staining of paraffin section with polyclonal antibody (Cat. # HP8033)

At our headquarters in Uden, we, as a privately-owned company, undertake the development, manufacturing, and storage of our products. Our offerings are accessible via our Dutch headquarters, sales office in Wayne (PA) USA, and through our network of over 65 distributors present in over 50 countries.

Since 2008, we have maintained our EN ISO 13485:2016 certification, demonstrating our commitment to meeting the highest standards in the industry.

Take advantage of our dedicated support team for any technical assistance you need while using our products or considering them for your research needs. Contact us directly at [support@hycultbiotech.com](mailto:support@hycultbiotech.com) and let us help you make the most of your scientific endeavors.





## What we stand for

- In-house development, production of antibodies and assays
- High quality products for reliable measurements and reproducibility
- Specialized, independent and professional support
- Experts in complement
- Collaboration in scientific projects

Let's improve **health**

Scan for the digital version with links to detailed product information.

[www.hycultbiotech.com](http://www.hycultbiotech.com)



### Hycult Biotech

Frontstraat 2a  
5405 PB Uden  
The Netherlands

T +31 (0)413 251335

F +31 (0)413 248353

E [info@hycultbiotech.com](mailto:info@hycultbiotech.com)

### Hycult Biotech Inc.

987 Old Eagle Road  
STE 709, Wayne  
PA 19087, USA

T +1 855 2492858

F +1 484 3683558

E [orders-us@hycultbiotech.com](mailto:orders-us@hycultbiotech.com)

Even though the information provided here is verified and believed to be accurate, there is always a chance that it is imprecise or may be outdated. Please make sure to visit our website [www.hycultbiotech.com](http://www.hycultbiotech.com) for the most recent product information and news.