

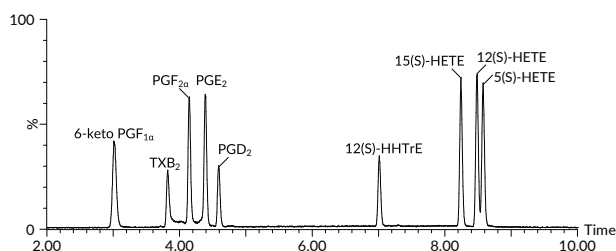
# MaxSpec® Mixtures for LC-MS

## SIMPLIFIED WORKFLOW SOLUTIONS



Cayman's MaxSpec® mixtures are designed to accelerate workflows by reducing the effort and variability of mixing individual internal and calibration standards. Each mixture undergoes batch-specific LC-MS content analysis and ongoing stability testing to ensure quality. Combine mixtures to expand the coverage of your lipid analysis.

- Packaged in glass ampules; headspace purged with argon
- At least 1 ml of solution per ampule
- Designed for direct snap and inject use
- Custom mixtures also available



Representative chromatogram of the compounds included in the Primary COX and LOX MaxSpec® LC-MS Mixture (Item No. 19101)

### Bile Acids

Item No.	Product Name	Contains (concentration of each compound)
33505	Bile Acids MaxSpec® Discovery Mixture*	4,300 nM: Tauroursodeoxycholic Acid 4,200 nM: Taurocholic Acid 4,000 nM: Taurochenodeoxycholic Acid, Taurodeoxycholic Acid, Tauroolithocholic Acid 3,400 nM: Chenodeoxycholic Acid 3,300 nM: Hyodeoxycholic Acid 2,600 nM: Lithocholic Acid 2,300 nM: Deoxycholic Acid, Glycocholic Acid, Glycoursodeoxycholic Acid, Ursodeoxycholic Acid 2,200 nM: Glycochenodeoxycholic Acid, Glycolithocholic Acid 2,100 nM: Glycodeoxycholic Acid 2,000 nM: Glycohyodeoxycholic Acid, Taurohyodeoxycholic Acid 1,200 nM: Cholic Acid

\*Also available: Deuterated Bile Acids MaxSpec® Discovery Mixture (Item No. 33506)

### Bioactive Eicosanoids, Precursors, & Metabolites

Item No.	Product Name	Contains (1 µg/ml of each compound)
19101	Primary COX and LOX MaxSpec® LC-MS Mixture*	6-keto Prostaglandin F <sub>1α</sub> , Thromboxane B <sub>2</sub> , Prostaglandin F <sub>2α</sub> , Prostaglandin E <sub>2</sub> , Prostaglandin D <sub>2</sub> , 12(S)-HHTrE, 15(S)-HETE, 12(S)-HETE, 5(S)-HETE
19300	Primary Prostaglandin Metabolite MaxSpec® LC-MS Mixture*	11β-Prostaglandin F <sub>2α</sub> , 15-keto Prostaglandin F <sub>2α</sub> , 15-keto Prostaglandin E <sub>2</sub> , 13,14-dihydro-15-keto Prostaglandin F <sub>2α</sub> , 13,14-dihydro-15-keto Prostaglandin E <sub>2</sub> , 13,14-dihydro-15-keto Prostaglandin D <sub>2</sub> , Prostaglandin J <sub>2</sub> , 15-deoxy-Δ <sup>12,14</sup> -Prostaglandin J <sub>2</sub>
19422	Secondary Prostaglandin Metabolite MaxSpec® LC-MS Mixture	tetranor-PGFM, tetranor-PGEM, tetranor-PGDM, 13,14-dihydro-15-keto Prostaglandin F <sub>2α</sub> , 13,14-dihydro-15-keto Prostaglandin E <sub>2</sub> , 13,14-dihydro-15-keto Prostaglandin D <sub>2</sub>

\*Also available: Deuterated Primary COX and LOX MaxSpec® LC-MS Mixture (Item No. 19228) and Deuterated Primary Prostaglandin Metabolite MaxSpec® LC-MS Mixture (Item No. 19304)

### Dietary & Microbiome-Related Fatty Acids

Item No.	Product Name	Contains (10 µg/ml of each compound)
18824	Short-chain Fatty Acid MaxSpec® LC-MS Mixture	Propionic Acid (C3:0), Butyric Acid (C4:0), Hexanoic Acid (C6:0), Heptanoic Acid (C7:0), Octanoic Acid (C8:0), Nonanoic Acid (C9:0), Decanoic Acid (C10:0), Dodecanoic Acid (C12:0)
19227	Odd-chain Fatty Acid MaxSpec® LC-MS Mixture	Undecanoic Acid (C11:0), Tridecanoic Acid (C13:0), 14-Pentadecenoic Acid (C15:1), Pentadecanoic Acid (C15:0), cis-10-Heptadecenoic Acid (C17:1), Heptadecanoic Acid (C17:0), cis-10-Nonadecenoic Acid (C19:1), Nonadecanoic Acid (C19:0)
17941	Polyunsaturated Fatty Acid MaxSpec® LC-MS Mixture	Adrenic Acid (C22:4), Arachidonic Acid (C20:4), Dihomo-γ-Linolenic Acid (C20:3), Docosahexaenoic Acid (C22:6), Docosapentaenoic Acid (C22:5), Eicosapentaenoic Acid (C20:5), Linoleic Acid (C18:2), α-Linolenic Acid (C18:3 n-3), γ-Linolenic Acid (C18:3 n-6), Stearidonic Acid (C18:4)
17942	Saturated/Monounsaturated Fatty Acid MaxSpec® LC-MS Mixture	Arachidic Acid (C20:0), Lauric Acid (C12:0), Lignoceric Acid (C24:0), Myristic Acid (C14:0), Nervonic Acid (C24:1), Oleic Acid (C18:1), Palmitic Acid (C16:0), Palmitoleic Acid (C16:1), Stearic Acid (C18:0)

## Oxylipins

Item No.	Product Name	Contains (1-10 µg/ml of each compound)
22638	ALA and GLA Oxylipin MaxSpec® LC-MS Mixture	9(S)-HOTrE, 13(S)-HOTrE, 13(S)-HOTrE(γ)
20666	Arachidonic Acid Oxylipin MaxSpec® LC-MS Mixture*	15(S)-HETE, 11(S)-HETE, 15-OxoETE, 8(S)-HETE, 12(S)-HETE, 9(R)-HETE, 5(S)-HETE, 12-OxoETE, 5-OxoETE
22280	DHA Oxylipin MaxSpec® LC-MS Mixture	(±)20-HDHA, (±)16-HDHA, 17(S)-HDHA, (±)13-HDHA, (±)10-HDHA, 14(S)-HDHA, (±)11-HDHA, (±)7-HDHA, (±)8-HDHA, (±)4-HDHA
22281	Dihomo-γ-Linolenic Acid Metabolite MaxSpec® LC-MS Mixture	Prostaglandin F <sub>1α</sub> , Prostaglandin E <sub>1</sub> , 15-keto Prostaglandin E <sub>1</sub> , 13,14-dihydro-15-keto Prostaglandin F <sub>1α</sub> , 13,14-dihydro-15-keto Prostaglandin E <sub>1</sub> , 8(S)-HETrE, 15(S)-HETrE, 12(S)-HETrE
21393	EPA Oxylipin MaxSpec® LC-MS Mixture	Prostaglandin E <sub>3</sub> , Prostaglandin F <sub>3α</sub> , (±)18-HEPE, 15(S)-HEPE, (±)8-HEPE, (±)11-HEPE, (±)9-HEPE, 12(S)-HEPE, 5(S)-HEPE
22640	Leukotriene B <sub>4</sub> Pathway MaxSpec® LC-MS Mixture	18-carboxy dinor Leukotriene B <sub>4</sub> , 20-carboxy Leukotriene B <sub>4</sub> , 20-hydroxy Leukotriene B <sub>4</sub> , Leukotriene B <sub>4</sub> , 5(S)-HETE
20794	Linoleic Acid Oxylipins MaxSpec® LC-MS Mixture*	(±)12(13)-DiHOME, (±)9(10)DiHOME, 9(S)-HODE, 13(S)-HODE, 13-OxoODE, 9-OxoODE, (±)12(13)-EpOME, (±)9(10)-EpOME

\*Also available: Deuterated Arachidonic Acid Oxylipin MaxSpec® LC-MS Mixture (Item No. 20668) and Deuterated Linoleic Acid Oxylipins MaxSpec® LC-MS Mixture (Item No. 20795)

## CYP450 Metabolites

Item No.	Product Name	Contains (1-10 µg/ml of each compound)
20665	Arachidonic Acid CYP450 Metabolite MaxSpec® LC-MS Mixture*	(±)8(9)-EET, (±)11(12)-EET, (±)14(15)-EET, (±)5(6)-DiHET, (±)8(9)-DiHET, (±)11(12)-DiHET, (±)14(15)-DiHET, 19(R)-HETE, 20-HETE
22639	Docosahexaenoic Acid CYP450 Oxylipins MaxSpec® LC-MS Mixture	(±)19(20)-DiHDPA, (±)16(17)-DiHDPA, (±)13(14)-DiHDPA, (±)10(11)-DiHDPA, (±)7(8)-DiHDPA, (±)19(20)-EpDPA, (±)16(17)-EpDPA, (±)13(14)-EpDPA, (±)10(11)-EpDPA, (±)7(8)-EpDPA
21394	EPA CYP450 Oxylipin MaxSpec® LC-MS Mixture	(±)17(18)-DiHETE, (±)11(12)-DiHETE, (±)14(15)-DiHETE, (±)8(9)-DiHETE, (±)5(6)-DiHETE, (±)17(18)-EpETE, (±)14(15)-EpETE, (±)8(9)-EpETE, (±)11(12)-EpETE

\*Also available: Deuterated Arachidonic Acid CYP450 Metabolite MaxSpec® LC-MS Mixture (Item No. 20667)

## Specialized Pro-Resolving Mediators

Item No.	Product Name	Contains (100 ng/ml of each compound)
19412	Lipoxin MaxSpec® LC-MS Mixture	Lipoxin B <sub>4</sub> , Lipoxin A <sub>4</sub> , 15(R)-Lipoxin A <sub>4</sub> , Arachidonic Acid
18702	SPM D-series MaxSpec® LC-MS Mixture	Resolvin D3, Resolvin D2, 17(R)-Resolvin D1, Resolvin D1, Resolvin D5, Docosahexaenoic Acid
19417	SPM E-series MaxSpec® LC-MS Mixture	Resolvin E1, (±)18-HEPE, Eicosapentaenoic Acid

## Vasoactive Eicosanoids

Item No.	Product Name	Contains (1 µg/ml of each compound)
19667	Primary Vascular Eicosanoid MaxSpec® LC-MS Mixture	6-keto Prostaglandin F <sub>1α</sub> , Thromboxane B <sub>2</sub> , 11-dehydro Thromboxane B <sub>2</sub> , 12(S)-HHTrE, 20-HETE, 12(S)-HETE, 12(S)-HETrE, (±)14(15)-EET, (±)11(12)-EET, (±)8(9)-EET
19668	Vascular Eicosanoid Urinary Metabolite MaxSpec® LC-MS Mixture	2,3-dinor-6-keto Prostaglandin F <sub>1α</sub> , 2,3-dinor Thromboxane B <sub>2</sub> , 11-dehydro-2,3-dinor Thromboxane B <sub>2</sub> , 11-dehydro Thromboxane B <sub>2</sub> , (±)14(15)-DiHET, (±)11(12)-DiHET, (±)8(9)-DiHET, 20-HETE

## Oxidative Stress

Item No.	Product Name	Contains (1 µg/ml of each compound)
18701	Oxidative Stress MaxSpec® LC-MS Mixture	8-Hydroxyguanosine, 8-Hydroxy-2'-deoxyguanosine, 2,3-dinor-8-iso Prostaglandin F <sub>2α</sub> , 8-iso Prostaglandin F <sub>1α</sub> , 8-iso Prostaglandin F <sub>2α</sub> , (±)5-iPF <sub>2α</sub> -VI, 8-iso-15-keto Prostaglandin F <sub>2α</sub> , 8-iso Prostaglandin E <sub>2</sub> , 8,12-iso-iPF <sub>2α</sub> -VI

Custom Formulations and Mixtures Available  
 Email [sales@caymanchem.com](mailto:sales@caymanchem.com) to discuss your specific project needs