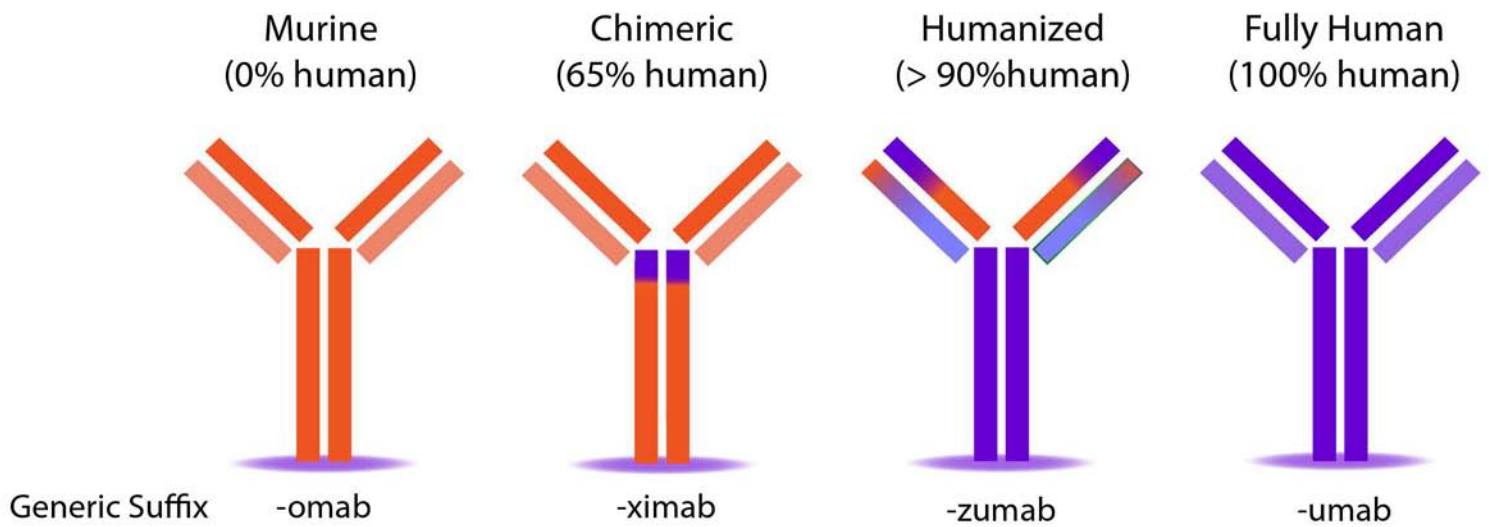
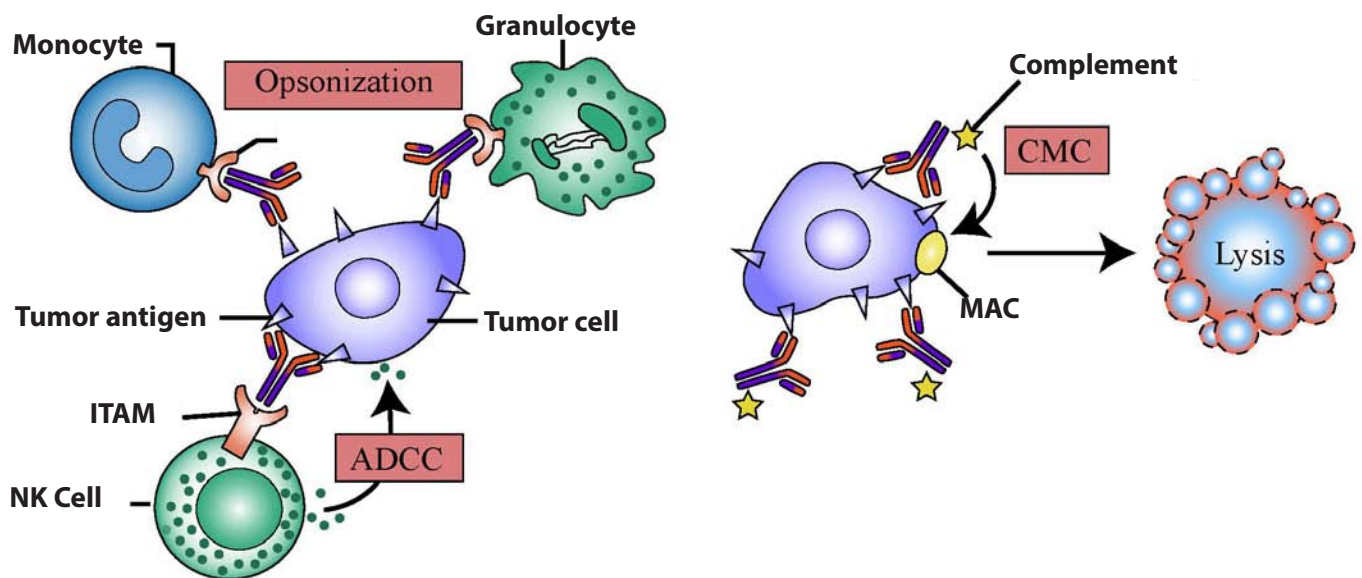
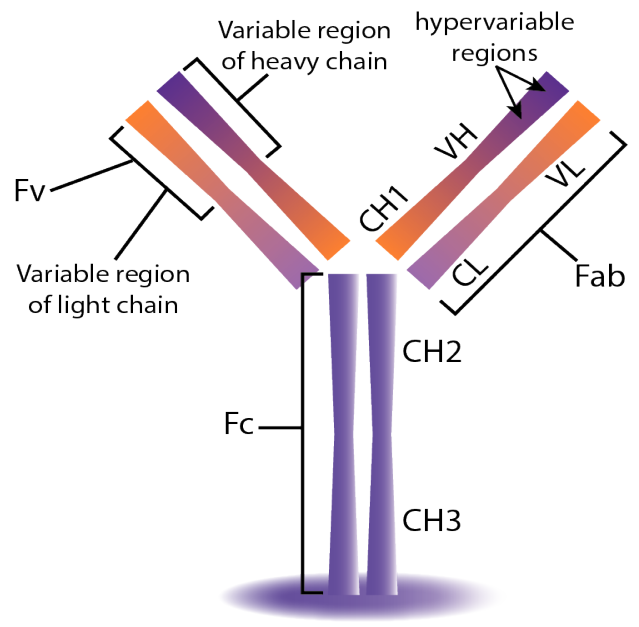


# Biosimilar Antibodies & ELISA Kits

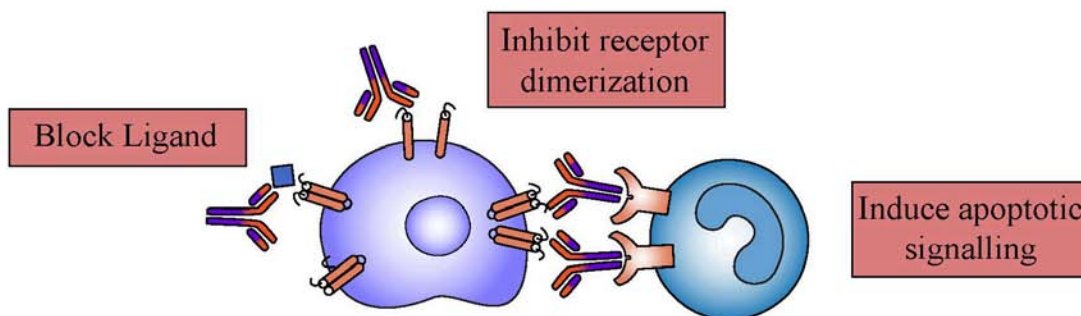


Human IgG based monoclonal antibodies (mAbs) are the fastest-growing category of therapeutics for cancer therapy. With various degree of humanization of the antibody developed from murine, large foreign biologic antibodies are able to detect and kill tumor cells. Several mechanisms of tumor cell killing by antibodies (mAbs) can be summarized as: direct action through receptor blockade or induction of apoptosis; immune-mediated cell killing by complement-dependent cytotoxicity (CDC), antibody-dependent cellular cytotoxicity (ADCC) or regulation of T cell function. Several monoclonal antibodies have received FDA approval for the treatment of a variety of solid tumors and hematological malignancies. BioVision is pleased to offer research-grade biosimilar antibodies and ELISA kits for your research needs. These antibodies can be used as controls for preclinical lead identification and potency assays for the development of novel therapeutics; ELISA kits can be used to identify biomarkers for (non-)response and risk factors for adverse drug reactions.

## Antibody (Immunoglobulin secreted by B cells)



**Figure A:** Immune-mediated effects of tumour-specific IgG



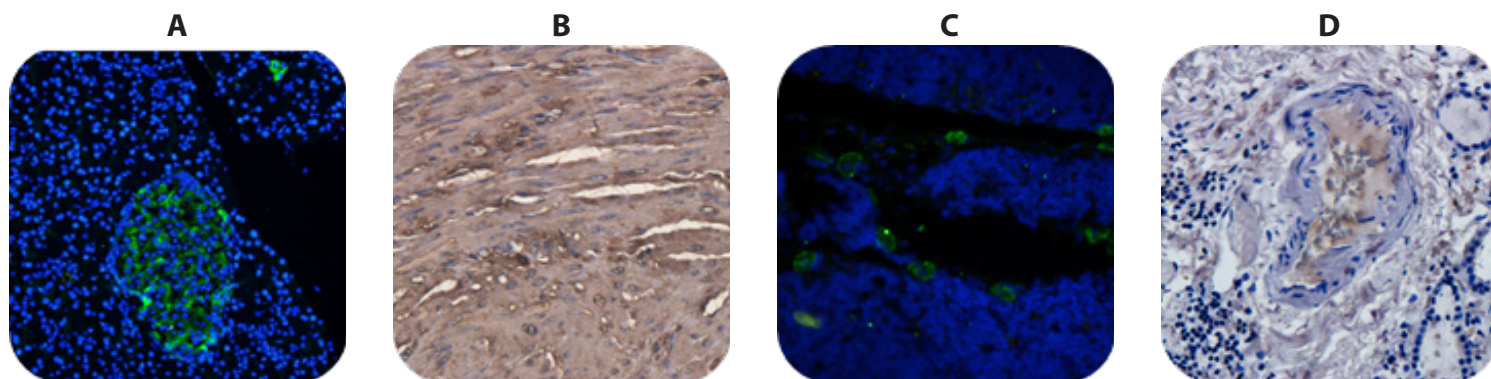
**Figure B:** Direct effects of tumour-specific IgG

## Biosimilar Antibodies

Research grade biosimilars-monoclonal antibodies are manufactured using recombinant technology. These antibodies are ideal research tools for preclinical lead identification and potency assays for the development of novel therapeutics.

### Key Features:

- **No additives:** Supplied in PBS buffer with preservative (0.02% Proclin™ 300)
- **High purity:** >98% purity as determined by SDS-PAGE
- **Low endotoxin:** <1 EU/μg as determined by the LAL-method
- **Versatile:** Can be used for various applications; ELISA, Neutralization, Flow Cytometry, IHC, IF



**Figure:** Immunofluorescent and Immunohistochemical staining using Anti-Carcinoembryonic antigen (Arcitumomab), Human IgG1 Antibody (Cat. No. A1096-100) (A & B) and Anti-CD52 (Campath-1H), Human IgG1 Antibody (Cat. No. A1105-100) (C & D).

## Biosimilar Antibodies

Product Name	Trade Name	Cat. No.	Isotype (Human)	Size
Anti-ANGPTL3 (Evinacumab), Human IgG4 Antibody		A2171	IgG4	100 μg
Anti-Beta-galactosidase, Human IgG1 Antibody		A1104	IgG1	200 μg
Anti-C5 (Eculizumab), Humanized Ab		A2138	IgG2/4	100 μg
Anti-Carcinoembryonic antigen (Arcitumomab), Human IgG1 Antibody	CEA-Scan	A1096	IgG1	200 μg
Anti-CCR4 (Mogamulizumab), Human IgG1, kappa Antibody		A2005	IgG1	200 μg
Anti-CCR5 (Leronlimab), Humanized Antibody		A2181	IgG4	100 μg
Anti-CD11a (Efalizumab), Human IgG1 Antibody	Raptiva	A1089	IgG1	200 μg
Anti-CD19 (Inebilizumab), Humanized Antibody		A2173	IgG1	100 μg
Anti-CD20 (Obinutuzumab), Humanized Antibody		A2180	IgG1	100 μg
Anti-CD20 (Ofatumumab), Human IgG1 Antibody		A2172	IgG1	100 μg
Anti-CD20 (Rituximab), Chimeric Antibody	Mabthera	A1049	IgG1	100 μg
Anti-CD22 (Epratuzumab), Human IgG1 Antibody		A1445	IgG1	200 μg
Anti-CD22 (Inotuzumab Ozogamicin), Humanized Antibody		A2179	IgG4	100 μg
Anti-CD3 epsilon (Muromonab), Mouse IgG2a, kappa Antibody		A2008	IgG2a	200 μg
Anti-CD30 (Brentuximab Vedotin), Chimeric Antibody		A2177	IgG1	100 μg
Anti-CD33 (Gemtuzumab), Human IgG4 Antibody		A1443	IgG4	200 μg
Anti-CD38 (Daratumumab), Human IgG1 Ab	Darzalex	A2151	IgG1	100 μg
Anti-CD4 (Campath-9H), Rabbit IgG, kappa Antibody		A2012	IgG	200 μg
Anti-CD4 (Clenoliximab), Human IgG4 Antibody	-	A1091	IgG4	200 μg
Anti-CD40L (Ruplizumab), Human IgG1 Antibody	Antova	A1094	IgG1	200 μg

## Biosimilar Antibodies

Product Name	Trade Name	Cat. No.	Isotype (Human)	Size
Anti-CD41 (Abciximab), Rabbit IgG, kappa Antibody		A2006	IgG	200 µg
Anti-CD52 (Campath-1H), Human IgG1 Antibody	Campath	A1105	IgG1	200 µg
Anti-CD6 (Itolizumab), Humanized Ab		A2164	IgG1	100 µg
Anti-CD79B (Polatuzumab Vedotin), Humanized Antibody		A2178	IgG1	100 µg
Anti-CD80 (Galiximab), Human IgG1, lambda Antibody		A2011	IgG1	200 µg
Anti-CTLA-4 (Ipilimumab), Humanized Ab		A2110	IgG1	100 µg
Anti-CTLA-4 (Tremelimumab), Human IgG2 Ab		A2163	IgG2	100 µg
Anti-Dabigatran (Idarucizumab), Humanized Antibody		A2169	Fab-G1-kappa	100 µg
Anti-EGFR (Cetuximab), Chimeric Antibody	Erbitux	A1047	IgG1	100 µg
Anti-EGFR (Matuzumab), Human IgG1 Antibody	-	A1090	IgG1	200 µg
Anti-EGFR (Panitumumab), humanized antibody	Vectibix	A1050	IgG1	100 µg
Anti-EGFR domain III (Nimotuzumab), Human IgG1, kappa Antibody		A2004	IgG1	200 µg
Anti-Flavivirus group antigen, Human IgG1 Antibody		A1102	IgG1	200 µg
Anti-HER2 (Pertuzumab), Humanized Antibody		A2111	IgG1	100 µg
Anti-HER2 Humanized Antibody		A1046	IgG1	100 µg
Anti-Human Ephrin Type A receptor 2 (1C1), Human IgG1 Antibody		A1095	IgG1	200 µg
Human IgG1, κ Isotype Control Antibody		A1100	IgG1	200 µg
Human IgG4, κ Isotype Control Antibody		A1101	IgG4	200 µg
Anti-IgE (Omalizumab), Humanized Ab		A2145	IgG1	100 µg
Anti-IGF-1R (Teprotumumab), Human IgG1 Ab	Tepezza	A2160	IgG1	100 µg
Anti-IL-12β (Ustekinumab), Human IgG1 Ab		A2137	IgG1	100 µg
Anti-IL-17Ra (Brodalumab), Human IgG2 Ab	Siliq, Kyntheum	A2155	IgG2	100 µg
Anti-IL-17α (Ixekizumab), Humanized Ab	Taltz	A2149	IgG4	100 µg
Anti-IL-17α (Secukinumab), Human IgG1 Ab		A2154	IgG1	100 µg
Anti-IL-1β (Canakinumab), Human IgG1 Antibody		A2144	IgG1	100 µg
Anti-IL-23α (Guselkumab), Human IgG1 Ab		A2147	IgG1	100 µg
Anti-IL23α (Mirikizumab), Humanized Antibody		A2174	IgG4	100 µg
Anti-IL-23α (Tildrakizumab), Humanized Ab		A2159	IgG1	100 µg
Anti-IL-2R alpha (CD25) (Basiliximab), Human IgG1 Antibody	Simulect	A1098	IgG1	200 µg
Anti-IL-2R alpha (Daclizumab), Human IgG1 Antibody	Zenapax	A1099	IgG1	200 µg
Anti-IL-4Ra (Dupilumab), Human IgG4 Ab	Dupixent	A2148	IgG4	100 µg
Anti-IL5 (Mepolizumab), Humanized Ab		A2158	IgG1	100 µg
Anti-IL-5 (Reslizumab), Humanized Antibody		A2167	IgG4	100 µg
Anti-IL-5Ra (Benralizumab), Humanized Ab	Fasenra	A2162	IgG1	100 µg
Anti-IL-6 (Siltuximab), Chimeric Antibody		A2143	IgG1	100 µg
Anti-IL-6 receptor (Tocilizumab), Human IgG1 Antibody		A1447	IgG1	200 µg
Anti-IL-6Ra (Sarilumab), Human IgG1 Ab		A2133	IgG1	100 µg
Anti-α4β7 Integrin (Vedolizumab), Humanized Ab	Entyvio	A2140	IgG1,	100 µg
Anti-Integrin alpha 4 (Natalizumab), Human IgG4 Antibody		A1444	IgG4	200 µg
Anti-alpha 5 beta 1 Integrin (Volociximab), Human IgG4 Antibody	-	A1092	IgG4	200 µg
Anti-Nectin-4 (Enfortumab Vedotin), Human IgG1 Antibody		A2176	IgG1	100 µg
Anti-OX40L (Oxelumab), Human IgG1 Antibody		A1088	IgG1	200 µg
Anti-PCSK9 (Alirocumab), Human IgG1 Ab	Praluent	A2153	IgG1	100 µg



## Biosimilar Antibodies

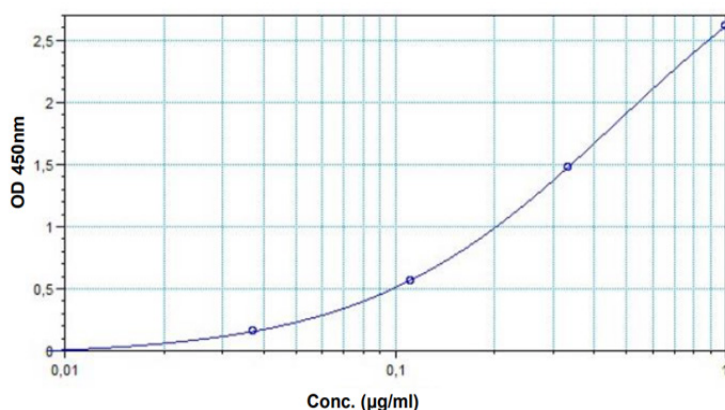
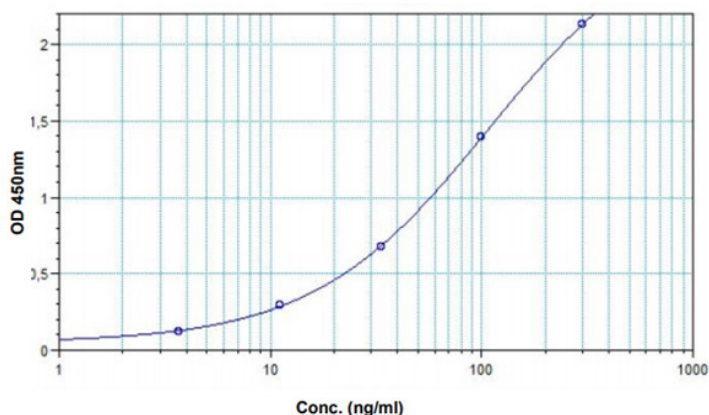
Product Name	Trade Name	Cat. No.	Isotype (Human)	Size
Anti-PCSK9 (Evolocumab), Human IgG2 Antibody		A2168	IgG2	100 µg
Anti-PD-1 (Camrelizumab), Humanized Ab		A2132	IgG4	100 µg
Anti-PD-1 (Nivolumab), Humanized Antibody	Opdivo	A1307	IgG1	100 µg
Anti-PD-1 (Pembrolizumab), Humanized Antibody	Keytruda	A1306	IgG1	100 µg
Anti-PD-1 (Sintilimab), Human IgG4 Ab		A2156	IgG4	100 µg
Anti-PD-1 (Spartalizumab), Humanized Ab		A2131	IgG4	100 µg
Anti-PD-1 (Toripalimab), Humanized Ab		A2161	IgG4	100 µg
Anti-PD-L1 (Avelumab), Human IgG1 Ab		A2152	IgG1	100 µg
Anti-PD-L1 (Durvalumab), Human IgG1 Antibody		A2109	IgG1	100 µg
Anti-PD-L1 Humanized Antibody		A1305	IgG1	100 µg
Anti-RSV (Felvizumab), Human IgG1 Antibody		A1446	IgG1	200 µg
Anti-RSV (Palivizumab), Humanized Antibody		A2166	IgG1	100 µg
Anti-TAG 72 (Satumomab), Mouse IgG1, kappa Antibody		A2017	IgG1	200 µg
Anti-TNF alpha (Humicade), Human IgG4 Antibody	Humicade	A1093	IgG4	200 µg
Anti-TNF alpha (Infliximab), Human IgG1 Antibody	Remicade	A1097	IgG1	200 µg
Anti-TNFSF11 (Denosumab), Human IgG2 Ab		A2150	IgG2	100 µg
Anti-TNF-α (Adalimumab), humanized Antibody	Humira	A1048	IgG1	100 µg
Anti-TNF-α (Certolizumab Pegol), Humanized Ab		A2142	Fab-G1-kappa	100 µg
Anti-TNF-α (Golimumab), Human IgG1 Ab		A2141	IgG1	100 µg
Anti-TNF-α (Humicade) Biotinylated Antibody		A2182	IgG4	50 µg
Anti-TNSF13B (Belimumab), Human IgG1 Antibody		A2170	IgG1	100 µg
Anti-TROP2 (Sacituzumab Govitecan), Humanized Antibody		A2175	IgG1	100 µg
Anti-V5 epitope tag, Human IgG1 Antibody		A1103	IgG1	200 µg
Anti-VEGF (Bevacizumab), humanized Antibody		A1045	IgG1	100 µg
Anti-VEGF-A Humanized Ab		A2136	IgG1	100 µg
Anti-VEGFR2 (Ramucirumab), Human IgG1 Ab	Cyramza	A2139	IgG1	100 µg

## BioSim™ ELISA Kits for Biosimilar Antibodies

BioSim™ ELISA kits are designed to detect and quantify the biosimilar antibodies in human serum and plasma. It measures the free-form of biosimilar antibodies in patients or study dose-dependent pharmacokinetics in animals as well as to identify biomarkers for (non-)response and risk factors for adverse drug reactions.

### Key Features:

- **Ready to use**
- **Rapid and Simple:** No expensive equipment or special handling/disposal required
- **Accurate:** Reproducible results with low intra & inter assay variability
- **Highly Sensitive and Specific:** No significant cross-reactivity or interference with other proteins present in native human serum or other therapeutic immunoglobulins.



**Figure:** Typical Standard Curve for BioSim™ Rituximab (Mabthera®) (Human) ELISA Kit (**Cat.No. E4371**) (Left) and BioSim™ Bevacizumab (Avastin®) (Human) ELISA Kit (**Cat. No. E4373**) (Right).

## BioSim™ ELISA Kits for Biosimilar Antibodies

Product Name	Trade Name	Cat. No.	Detection Range	Size
BioSim™ Adalimumab ELISA Kit	Humira	E4372	30 - 1000	100 Assays
BioSim™ Aflibercept (Eylea®)(Human) ELISA Kit		E4854	30 - 1000	96 assays
BioSim™ Avelumab ELISA Kit	Bavencio	E4556	100 - 3000	100 Assays
BioSim™ Bevacizumab (Human) ELISA Kit		E4373	30 - 1000	100 Assays
BioSim™ Certolizumab pegol ELISA Kit	Cimzia	E4699	12 - 1000	96 Assays
BioSim™ Cetuximab ELISA Kit	Erbix	E4379	100 - 3000	100 Assays
BioSim™ Denosumab ELISA Kit	Prolia	E4380	100 - 3000	100 Assays
BioSim™ Etanercept ELISA Kit	Enbrel	E4374	100 - 3000	100 Assays
BioSim™ Golimumab ELISA Kit	Simponi	E4377	11 - 300	100 Assays
BioSim™ Infliximab ELISA Kit	Remicade	E4375	100 - 3000	100 Assays
BioSim™ Infliximab ELISA Kit	Remsima	E4378	100 - 3000	100 Assays
BioSim™ Ipilimumab ELISA Kit	Yervoy	E4384	10 - 1000	100 Assays
BioSim™ Natalizumab (Tysabri®) (Human) ELISA Kit		E4856	30 - 1000	96 assays
BioSim™ Nivolumab ELISA Kit	Opdivo	E4382	30 - 3000	100 Assays
BioSim™ Omalizumab (Human) ELISA Kit		E4381	10 - 1000	100 Assays
BioSim™ Pembrolizumab ELISA Kit	Keytruda	E4383	30 - 1000	100 Assays
BioSim™ Ramucirumab ELISA Kit	Cyramza	E4698	20 - 600	96 Assays
BioSim™ Rituximab ELISA Kit	Mabthera	E4371	3 - 300	100 Assays
BioSim™ Tocilizumab (Actemra®) (Human) ELISA Kit		E4858	10-300	96 assays
BioSim™ Ustekinumab ELISA Kit	Stelara	E4695	3 - 100	96 Assays
BioSim™ Vedolizumab ELISA Kit	Entyvio	E4697	30 - 1000	96 Assays

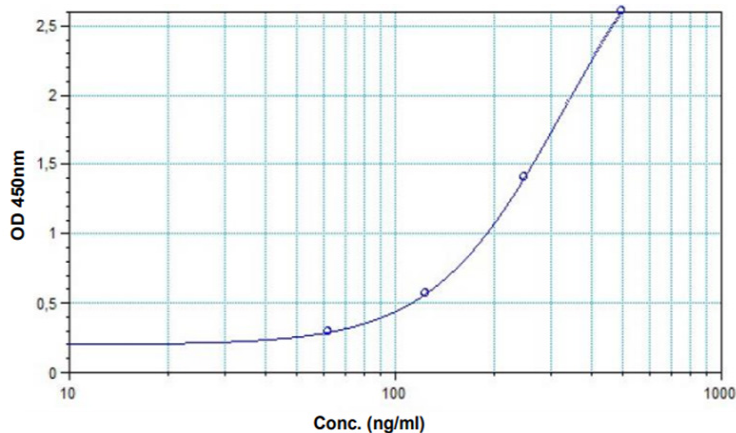
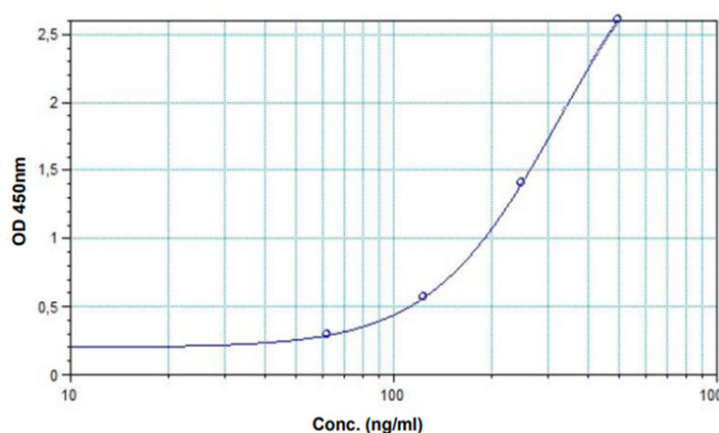
Please visit [www.BioVision.com](http://www.BioVision.com) for a comprehensive overview on our products!

# BioSim™ ELISA Kits for Anti-Drug Antibodies

Anti-drug antibodies cause unwanted immunogenicity and suppress the therapeutic effects of the treatment and, in rare cases, induce adverse effects. Detecting and monitoring the level of anti-drug antibodies is important when studying adverse drug reactions. BioSim™ ELISA kits are designed to detect or quantify antibodies against biosimilar antibodies in human serum and plasma.

## Key Features:

- **Ready to use**
- **Rapid and Simple:** No expensive equipment or special handling/disposal required
- **Accurate:** Reproducible results with low intra & inter assay variability
- **Highly Sensitive and Specific**



**Figure:** Typical Standard Curve for BioSim™ anti-Trastuzumab (Herceptin®) (Human) ELISA Kit (**Cat.No. E4386**) (Left) and BioSim™ anti-Adalimumab (Humira®) (Human) ELISA Kit (**Cat. No. E4388**) (Right).

## BioSim™ ELISA Kits for Anti-Drug-Antibodies

Product Name	Trade Name	Cat. No.	Detection Range	Size
BioSim™ anti-Adalimumab (Humira®) (Human) ELISA Kit		E4388	Human	100 assays
BioSim™ anti-Aflibercept (Eylea®) (Human) ELISA Kit		E4855	Human	96 assays
BioSim™ anti-Avelumab (Bavencio®) (Human) ELISA Kit		E4557	Human	100 assays
BioSim™ anti-Bevacizumab (Human) ELISA Kit		E4389	Human	100 assays
BioSim™ anti-Cetuximab (Erbix®) (Human) ELISA Kit		E4391	Human	100 assays
BioSim™ anti-Denosumab (Prolia®) (Human) ELISA Kit		E4394	Human	100 assays
BioSim™ anti-Etanercept (Enbrel®) (Human) ELISA Kit		E4392	Human	100 assays
BioSim™ anti-Filgrastim (Neupogen®) (Human) ELISA Kit		E4399	Human	100 assays
BioSim™ anti-Golimumab (Simponi®) (Human) ELISA Kit		E4393	Human	100 assays
BioSim™ anti-HER2 (Human) ELISA Kit		E4376	Human	100 assays
BioSim™ anti-HER2 mab (Human) ELISA Kit		E4386	Human	100 assays
BioSim™ anti-Infliximab (Remicade®) (Human) ELISA Kit		E4387	Human	100 assays
BioSim™ anti-Infliximab (Remsima®) (Human) ELISA Kit		E4390	Human	100 assays
BioSim™ anti-Ipilimumab ELISA Kit	Yervoy	E4398	Human	100 Assays
BioSim™ anti-Natalizumab (Tysabri®) (Human) ELISA Kit		E4857	Human	96 assays
BioSim™ anti-Nivolumab ELISA Kit	Opdivo	E4396	Human	100 Assays
BioSim™ anti-Omalizumab (Human) ELISA Kit		E4395	Human	100 Assays
BioSim™ anti-Pembrolizumab ELISA Kit	Keytruda	E4397	Human	100 Assays

## BioSim™ ELISA Kits for Anti-Drug-Antibodies

Product Name	Trade Name	Cat. No.	Detection Range	Size
BioSim™ anti-Rituximab (Mabthera®) (Human) ELISA Kit		E4385	Human	100 assays
BioSim™ anti-Tocilizumab (Actemra®) (Human) ELISA Kit		E4859	Human	96 assays
BioSim™ anti-VEGF-A (Human) ELISA Kit		E4312	Human	100 assays

Please visit [www.BioVision.com](http://www.BioVision.com) for a comprehensive overview on our products!

Distributed by:



In Italy: Vinci-Biochem Srl  
Contatto diretto: tel. 0571 568 147  
vb@vincibiochem.it  
www.vincibiochem.it