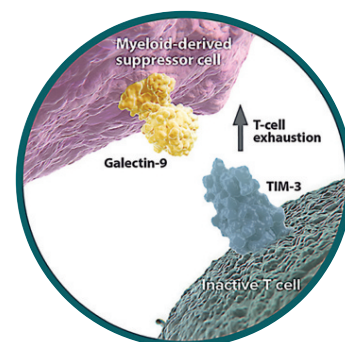


## TIM-3 – Galectin-9 Pathway

T Cell Immunoglobulin and Mucin-3 (TIM-3; HAVcr-2) is an immune checkpoint receptor involved in the suppression of both innate and adaptive immune cells. It is expressed on a wide variety of immune cells, including cytotoxic T cells, regulatory T cells (Tregs), natural killer (NK) cells and antigen-presenting cells (APCs) such as dendritic cells (DCs). TIM-3 suppresses effector cells through the interaction with a broad array of ligands: carcinoembryonic antigen-related cell adhesion molecule 1 (CEACAM1), galectin-9, phosphatidylserine (PS) and high mobility group box 1 (HMGB1). Blockade of TIM-3 can rescue NK-cell activity, promotes tumor antigen processing and reinvigorates exhausted T cells, restoring their proliferation and function. **TIM-3 plays an important role in autoimmune diseases, chronic viral infections and tumors.**



**SELECTED REVIEWS:** TIM-3 as a promising target for cancer immunotherapy in a wide range of tumors: N. Sauer, et al.; Cancer Immunol. Immunother. **72**, 3405 (2023) • Galectin-9 in cancer therapy: from immune checkpoint ligand to promising therapeutic target: M. Zhang, et al.; Front. Cell Dev. Biol. **11**, 1322205 (2024) • Therapeutic potential of TIM-3 inhibition in cancer, viral infections, and autoimmune disorders: A. Manzoor & K. Barakat; Int. J. Biochem. Cell Biol. **186**, 106826 (2025)

## Validated Recombinant Proteins and Antibodies

PROTEINS	PID	SIZE	SOURCE	ENDOTOXIN	SPECIES
<b>Galectin-9 (human):Fc (human) (rec.)</b>	CHI-HF-210GAL9	50 µg	HEK 293 cells	<0.005EU/µg	Hu
<b>HMGB1 (human) (rec.) (His)</b>	CHI-HR-200HMGB1	25 µg	E. coli	<0.1EU/µg	Hu
<b>HMGB1 (rat) (rec.) (His)</b>	CHI-RR-300HMGB1	25 µg	E. coli	<0.1EU/µg	Rt
<b>HMGB1 (rat):Fc (human) (rec.)</b>	CHI-RF-311HMGB1	50 µg	CHO cells	<0.06EU/µg	Rt
<b>Tim-3 (mouse):Fc (mouse) (rec.)</b>	CHI-MF-110T3	100 µg	HEK 293 cells	<0.005EU/µg	Ms
<b>Tim-3 (mouse):Fc (human) (rec.)</b>	AG-40B-0191	50 µg	HEK 293 cells	<0.01EU/µg	Ms
<b>Tim-3 (human):Fc (human) (rec.)</b>	CHI-HF-210T3	100 µg	CHO cells	<0.06EU/µg	Hu
<b>Tim-3 (human):Fc (mouse) (rec.)</b>	CHI-HF-211T3	100 µg	CHO cells	<0.06EU/µg	Hu
ANTIBODIES	PID	SIZE	ISOTYPE	APPLICATION	SPECIES
<b>anti-Tim-3 (mouse), mAb (TI 142F)</b>	AG-20A-0030	50 µg   100 µg	Rat IgG2aκ	ELISA, FACS	Ms
<b>anti-Tim-3 (mouse), mAb (TI 339H)</b>	AG-20A-0029	50 µg   100 µg	Rat IgG2aκ	ELISA, WB	Ms

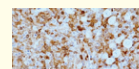
### IHC GRADE

#### anti-Galectin-9 (human), Rabbit Monoclonal (RM499)

REV-31-1391-00

100 µl

**FIGURE:** IHC staining of FFPE human Hodgkin lymphoma tissue section using Clone RM499 at a 1:200 dilution.



#### anti-TIM-3 (human), Rabbit Monoclonal (RM448)

REV-31-1340-00

100 µl

**FIGURE:** IHC staining of FFPE human lung cancer tissue section using Clone RM448 at a 1:200 dilution..

