

Sphingolipidoses Pathways

Gangliosides, Sulfatides, Sphingomyelins

Sphingosine

Acid Ceramidase
Farber's Disease

Ceramide

β -Glucosidase
Gaucher Disease

Glucosylceramide

β -Galactosidase
Krabbe Disease

Lactosylceramide

Ganglioside Neuraminidase
Sialidosis

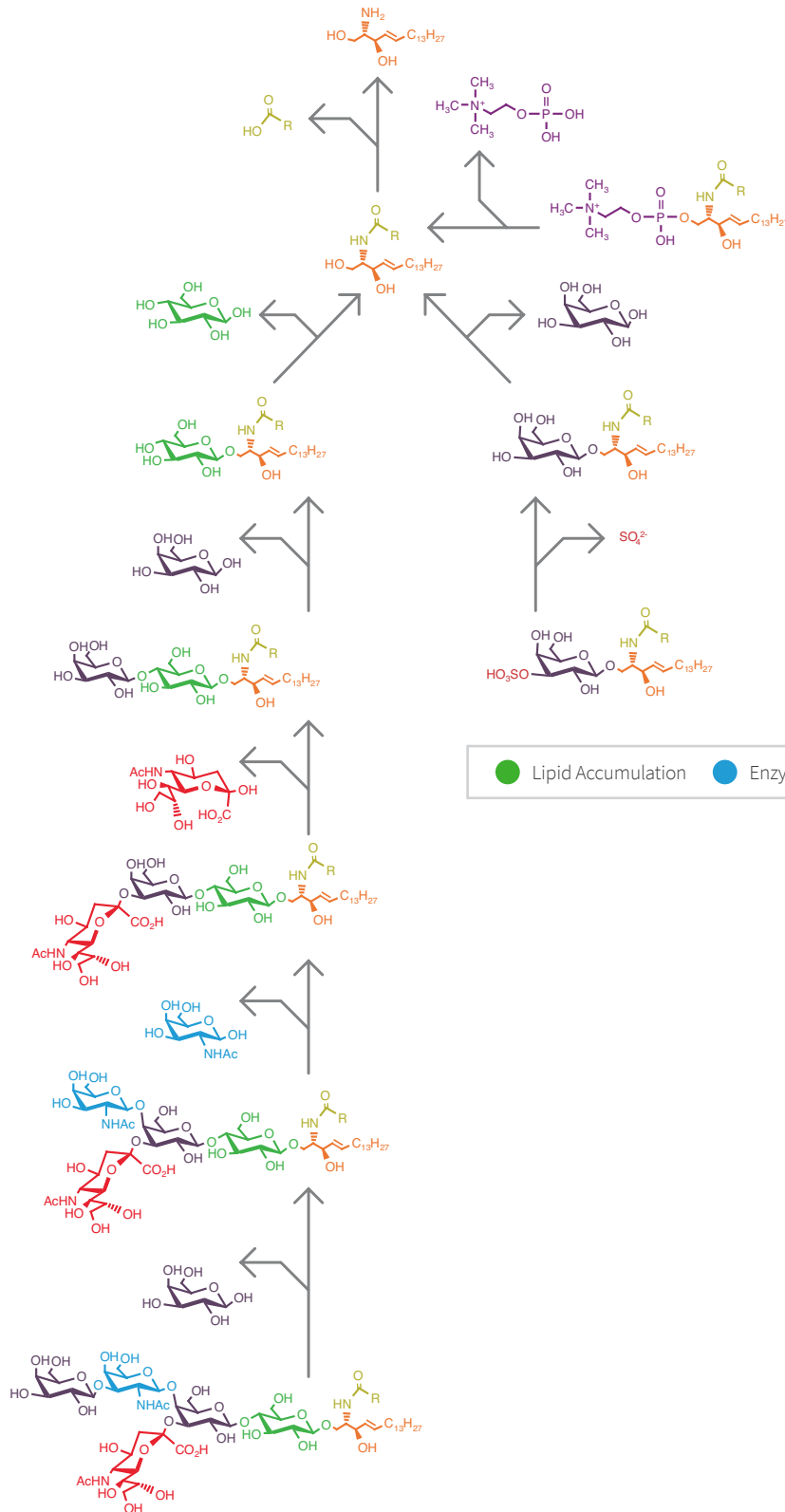
GM₃

Hexosaminidase A
Tay-Sachs Disease
Sandhoff Disease

GM₂

Acid β -Galactosidase
GM₁ Gangliosidosis

GM₁



Sphingomyelinase
Niemann-Pick Disease Types A and B

Sphingomyelin

β -Galactosidase
Krabbe Disease

Galactosylceramide

Arylsulfatase A
Metachromatic Leukodystrophy

Sulfatide

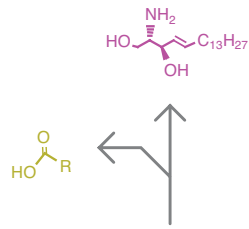
● Lipid Accumulation ● Enzyme Deficiency ● Associated Disease

Sphingolipidoses Pathways

Globosides

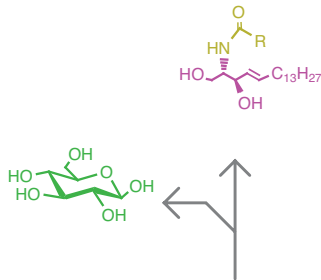
Sphingosine

Acid Ceramidase
Farber's Disease



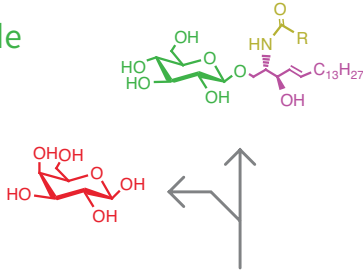
Ceramide

β -Glucosidase
Gaucher Disease



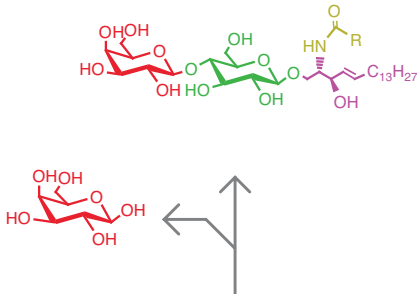
Glucosylceramide

β -Galactosidase
Krabbe Disease



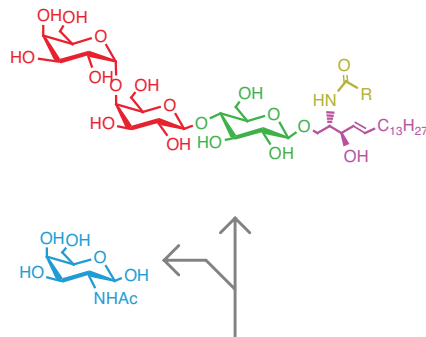
Lactosylceramide

α -Galactosidase A
Fabry Disease

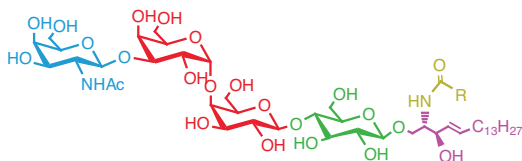


Gb₃ (CTH)

β -Hexosaminidase A + B
Sandhoff Disease



Gb₄



● Lipid Accumulation ● Enzyme Deficiency ● Associated Disease