

## Analysis of Apolipoproteins by ELISA, ELISpot and Western blot

Apolipoproteins are of physiological importance and are associated with various diseases such as dyslipidemia and cardiovascular/neurodegenerative disease. Mabtech offers monoclonal antibodies for detection of a wide range of apolipoproteins. The ELISAs are suitable for analysis of cell supernatants and samples from serum/plasma and our ELISpot kits enable detection of apoE secretion at the single-cell level.

### Available formats



Antibodies



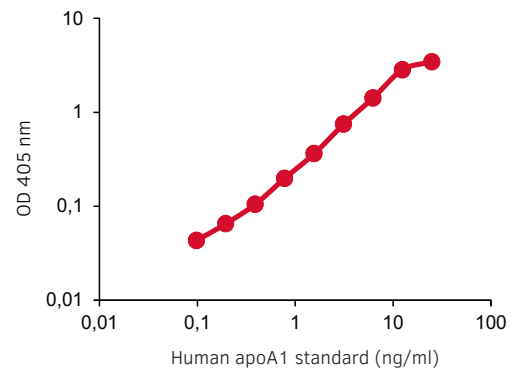
ELISA



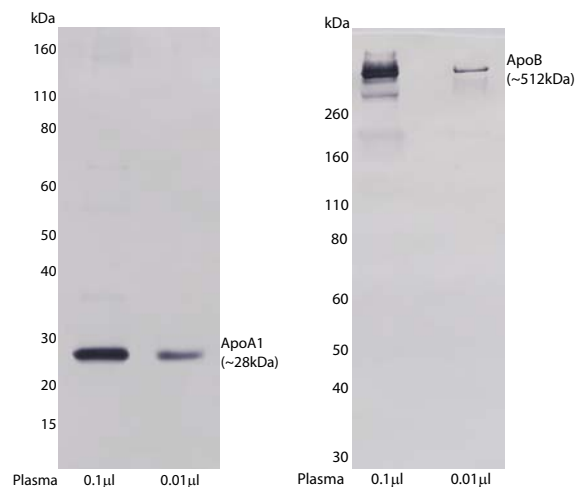
ELISpot



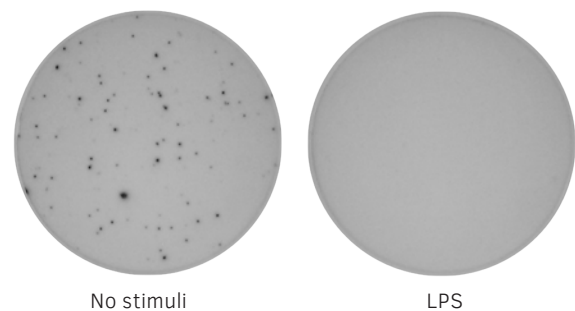
Western blot



We provide **ELISA** development kits and ELISA<sup>PRO</sup> kits for sensitive detection of apolipoproteins. The graph shows a representative apoA1 standard curve.



Many of our mAbs specific for apolipoproteins can be used in **Western blot**. In the image, human apoA1 and apoB are detected with Western blot using mAb HDL44 and mAb LDL11, respectively.



For apoE analysis by **ELISpot** we offer basic ELISpot kits and kits supplied with pre-coated plates. In the image, overnight incubation of PBMCs with LPS was shown to have a negative effect on apoE secretion.

| PRODUCT   | SIZE              | CODE                     |
|---|-------------------|--------------------------|
| <b>Antibodies</b>   |                   |                          |
| anti-human* apoA1 mAb HDL 110, purified                     | 250 µg/1 mg       | 3710-3- <b>250/1000</b>  |
| anti-human* apoA1 mAb HDL 44, biotinylated                  | 250 µg/1 mg       | 3710-6- <b>250/1000</b>  |
| anti-mouse apoA1 mAb mHDL93, purified                       | 250 µg/1 mg       | 3750-3- <b>250/1000</b>  |
| anti-mouse apoA1 mAb mHDL36, biotinylated                   | 250 µg/1 mg       | 3750-6- <b>250/1000</b>  |
| anti-human* apoB mAbs LDL 20/17, purified                   | 250 µg/1 mg       | 3715-3- <b>250/1000</b>  |
| anti-human* apoB mAb LDL 11, biotinylated                   | 250 µg/1 mg       | 3715-6- <b>250/1000</b>  |
| anti-human* apoB mAb LDL 11, FITC                           | 250 µg            | 3715-7                   |
| anti-human apoD mAb D544, purified                          | 250 µg/1 mg       | 3714-3- <b>250/1000</b>  |
| anti-human apoD mAb D263, biotinylated                      | 250 µg/1 mg       | 3714-6- <b>250/1000</b>  |
| anti-human apoE mAb E276, purified                          | 250 µg/1 mg       | 3712-3- <b>250/1000</b>  |
| anti-human* apoE mAb E887, biotinylated                     | 250 µg/1 mg       | 3712-6- <b>250/1000</b>  |
| anti-human/monkey apoE mAb E981, purified                   | 250 µg/1 mg       | 3712M-3- <b>250/1000</b> |
| anti-mouse apoE mAb mE1, purified                           | 250 µg/1 mg       | 3752-3- <b>250/1000</b>  |
| anti-mouse apoE mAb mE29, biotinylated                      | 250 µg/1 mg       | 3752-6- <b>250/1000</b>  |
| anti-human* apoH mAb H219, purified                         | 250 µg/1 mg       | 3711-3- <b>250/1000</b>  |
| anti-human* apoH mAb H464, biotinylated                     | 250 µg/1 mg       | 3711-6- <b>250/1000</b>  |
| anti-human apoJ (Clusterin) mAb J29, purified               | 250 µg/1 mg       | 3713-3- <b>250/1000</b>  |
| anti-human apoJ (Clusterin) mAb J84, biotinylated           | 250 µg/1 mg       | 3713-6- <b>250/1000</b>  |
| anti-human apoM mAbs M5, purified                           | 250 µg/1 mg       | 3716-3- <b>250/1000</b>  |
| anti-human apoM mAb M7, biotinylated                        | 250 µg/1 mg       | 3716-6- <b>250/1000</b>  |
| <b>ELISA</b>  |                   |                          |
| Human* apoA1 ELISA development kit (ALP)                    | for 6/20 plates   | 3710-1A- <b>6/20</b>     |
| Human* apoA1 ELISA development kit (HRP)                    | for 6/20 plates   | 3710-1H- <b>6/20</b>     |
| Human* apoA1 ELISA <sup>PRO</sup> kit, pre-coated           | 2/10 plates       | 3710-1HP- <b>2/10</b>    |
| Mouse apoA1 ELISA <sup>PRO</sup> kit, pre-coated            | 2/10 plates       | 3750-1HP- <b>2/10</b>    |
| Human* apoB ELISA development kit (ALP)                     | for 6/20 plates   | 3715-1A- <b>6/20</b>     |
| Human* apoB ELISA development kit (HRP)                     | for 6/20 plates   | 3715-1H- <b>6/20</b>     |
| Human* apoB ELISA <sup>PRO</sup> kit, pre-coated            | 2/10 plates       | 3715-1HP- <b>2/10</b>    |
| Human apoD ELISA <sup>PRO</sup> kit, pre-coated             | 2/10 plates       | 3714-1HP- <b>2/10</b>    |
| Human apoE ELISA development kit (ALP)                      | for 6/20 plates   | 3712-1A- <b>6/20</b>     |
| Human apoE ELISA development kit (HRP)                      | for 6/20 plates   | 3712-1H- <b>6/20</b>     |
| Human apoE ELISA <sup>PRO</sup> kit, pre-coated             | 2/10 plates       | 3712-1HP- <b>2/10</b>    |
| Monkey apoE ELISA development kit (ALP)                     | for 6/20 plates   | 3712M-1A- <b>6/20</b>    |
| Monkey apoE ELISA development kit (HRP)                     | for 6/20 plates   | 3712M-1H- <b>6/20</b>    |
| Mouse apoE ELISA <sup>PRO</sup> kit, pre-coated             | 2/10 plates       | 3752-1HP- <b>2/10</b>    |
| Human* apoH ELISA <sup>PRO</sup> kit, pre-coated            | 2/10 plates       | 3711-1HP- <b>2/10</b>    |
| Human apoJ (Clusterin) ELISA <sup>PRO</sup> kit, pre-coated | 2/10 plates       | 3713-1HP- <b>2/10</b>    |
| Human apoM ELISA <sup>PRO</sup> kit, pre-coated             | 2/10 plates       | 3716-1HP- <b>2/10</b>    |
| <b>ELISpot</b>  |                   |                          |
| Human apoE ELISpot <sup>BASIC</sup> (ALP)                   | for 4 plates      | 3712-2A                  |
| Human apoE ELISpot <sup>BASIC</sup> (HRP)                   | for 4 plates      | 3712-2H                  |
| Human apoE ELISpot <sup>PLUS</sup> (ALP)                    | 2/10 white plates | 3712-4APW- <b>2/10</b>   |
| Human apoE ELISpot <sup>PLUS</sup> (HRP)                    | 2/10 white plates | 3712-4HPW- <b>2/10</b>   |

\* Cross-reacts with non-human primate apolipoproteins.