

Cyclic AMP and Cyclic GMP ELISA Kits

Cyclic nucleotide ELISA kits tailored to provide highly sensitive results for accurate determination of intracellular and extracellular cAMP/cGMP levels



cAMP ELISA Kits

Item No.	Product Name
581001	Cyclic AMP ELISA Kit
581002	Cyclic AMP ELISA Kit (without Acetic Anhydride)
501040	Cyclic AMP Select ELISA Kit

cGMP ELISA Kits

Item No.	Product Name
581021	Cyclic GMP ELISA Kit
581022	Cyclic GMP ELISA Kit (without Acetic Anhydride)

Distributed by



Flexible Sample Preparation

Cayman Chemical's Cyclic AMP (cAMP) and Cyclic GMP (cGMP) ELISA Kits are competitive assays that can detect sub-picomolar concentrations of cAMP/cGMP in various sample types. Acetic anhydride is provided in Item Nos. 581001 and 581021 for use in an optional acetylation procedure prior to sample analysis. Because acetylation yields up to a 10-fold increase in assay sensitivity it is often recommended, but depending on your research application, this initial sample preparation step is not always necessary.* Use the comparison chart below of typical assay ranges to determine if your sample would benefit from a pre-assay acetylation step. Note that Cayman's Cyclic AMP Select ELISA Kit achieves excellent sensitivity without the need to perform a pre-assay acetylation step.

	Acetylated (pmol/ml)			Non-Acetylated (pmol/ml)		
	Assay Range	50% B/B ₀	80% B/B ₀	Assay Range	50% B/B ₀	80% B/B ₀
Cyclic AMP ELISA Kit	0.078-10	0.5	0.1	0.3-750	15-25	3
Cyclic AMP Select ELISA Kit	<i>Extra acetylation step not required!</i>			0.09-200	4-8	0.6
Cyclic GMP ELISA Kit	0.023-3	0.46	0.1	0.23-30	3-6	1

*Acetylation is recommended if the expected cAMP/cGMP concentration is <5 pmol/ml

Multiple Sample Matrix Compatibility

Cayman's cAMP/cGMP ELISAs are not species specific and can be used universally with the following sample types:

	Intracellular		Extracellular		
	Cell Lysates	Tissue Homogenates	Cell Media	Plasma	Urine
Cyclic AMP ELISA Kit	✓	✓		✓	✓
Cyclic AMP Select ELISA Kit		✓	✓	✓	✓
Cyclic GMP ELISA Kit	✓	✓		✓	✓

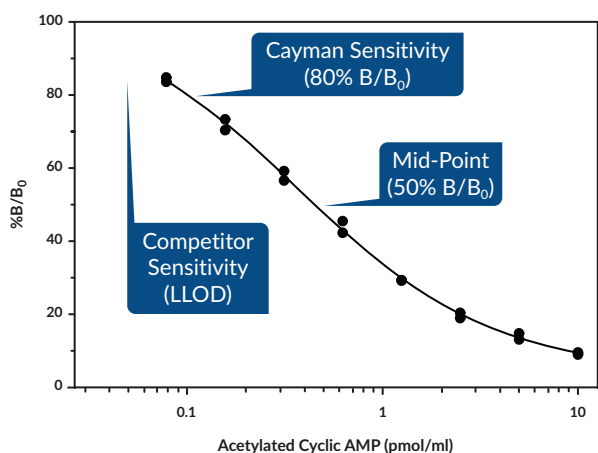
Cayman's AChE Tracer Advantage

Cayman's cAMP/cGMP ELISAs were designed with competitive assay principles and employ AChE as the detection enzyme. AChE offers these unique advantages:

- Fast turnover rate (3X faster than HRP or AP)
- Active in a wide pH range (pH 5.0-10.0)
- Does not self-inactivate during turnover
- Enables redevelopment if assay is accidentally splashed or spilled

Assay Sensitivity Defined

Because not all assay companies define their sensitivity similarly, we point out the intended definitions of the points of quantitation on the typical standard curves generated by our kits. Cayman's assays report sensitivity as the 80% B/B₀ point on the standard curve. This value can be trusted to give you reliable, reproducible data.

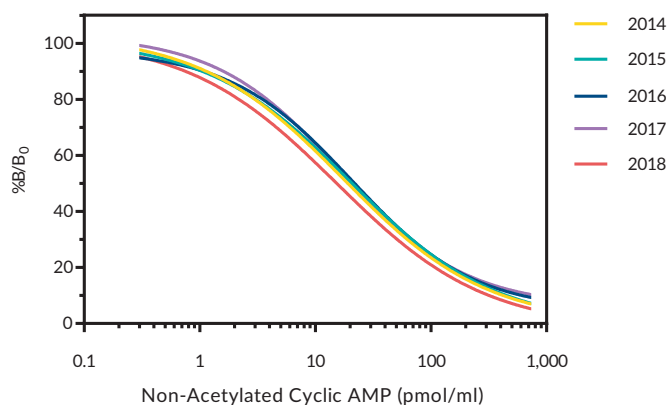


Cyclic AMP ELISA Kit - Item No. 581001 (with acetylation step) Points of Quantitation Defined.

Batch-to-Batch Consistency

Each of our assay kits undergoes rigorous quality testing to certify high precision and accuracy and to deliver the sensitivity and specificity needed to detect biologically significant analyte levels. Our attention to these details ensures you will obtain reproducible results, from day-to-day and batch-to-batch.

Cyclic AMP Standard Curve (%Binding) Over 5 Years



Cyclic AMP ELISA Kit - Item No. 581001 (without acetylation step) Batch-to-Batch Consistency. Average binding data for all production batches, approximately 10 batches, of cAMP ELISA kits between 2014-2018.

LIMITED TIME OFFER

30% OFF cAMP & cGMP ELISAs!

Contact your local distributor for more information.

Distributed by:



In Italy: Vinci-Biochem Srl
Contatto diretto: tel. 0571 568 147
vb@vincibiochem.it
www.vincibiochem.it