

Stem Cell ELISA Kits

Stem cells are unspecialized cells capable of renewing themselves or differentiate into specialized cells under certain physiologic or experimental conditions. The fate of stem cells is regulated by various growth factors, transcription factors or epigenetic modifications. BioVision offers accurate, fully validated, ready-to-use ELISA Kits for convenient and sensitive quantitation of a wide range of targets in various sample types. These ELISA kits included pre-coated plates with capture/detection antibodies, standards, and buffers and accessory reagents. Our stringent manufacturing and quality control standards allow us to offer the highest levels of performance and consistency with each ELISA kit you run.

Key Features:

- **Accurate:** reproducible results with low intra & inter assay variability
- **High Sensitivity and Specificity**
- **Versatile:** broad range of sample types such as serum, plasma, tissue, cell culture supernatant, urine and many other biological fluids.
- **Convenient:** No special handling or disposal required
- **Extremely Stable:** long shelf life, very low background

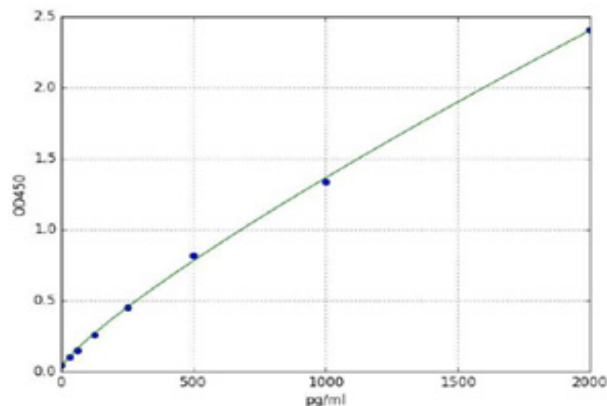
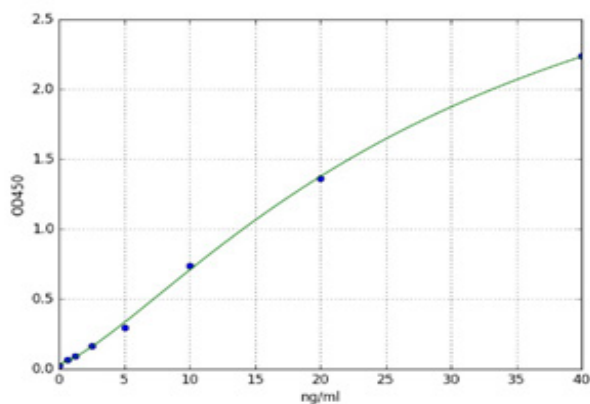


Figure: Standard curve for human SMAD3 ELISA Kits (K4200-100) (Left) and human FGF-1 ELISA kits (E4281-100) (Right).

Product Name	Cat. No.	Specificity	Detection Method
ABCG2	K4188	Human	Sandwich
Activin A	K4769	Human	Sandwich
Angiopoietin-1	K7115	Human	Sandwich
Angiostatin	K4755	Human	Sandwich
BAFF/CD257	K4181	Human	Sandwich

In ITALIA please contact: Vinci-Biochem - Tel +39 0571 568 147 - vb@vincibiochem.it - www.vincibiochem.it

155 S. Milipitas Blvd, Milipitas, CA 95035

T: 408-493-1800 F: 408-493-1801

Toll Free: 800-891-9699 (US Only)

BioVision
BioVision Incorporated



Product Name	Cat. No.	Specificity	Detection Method
Beta-NGF	K4787	Human	Sandwich
BMP-2	K4744	Human	Sandwich
BMP-4	K4745	Human	Sandwich
	K4746	Human (For Lysates)	Sandwich
BMP-5	K4747	Human	Sandwich
BMP-6	K4748	Human	Sandwich
BMP-7	K4749	Human	Sandwich
Caspase-1	K4180	Mouse	Sandwich
CD133	K4192	Human	Sandwich
CD44	K4178	Human	Sandwich
c-jun	K4198	Human	Sandwich
c-myc	K4204	Human	Sandwich
CXCR4	K4194	Human	Sandwich
Cytokeratin-19	K4186	Human	Sandwich
Desmin	K4190	Human	Sandwich
DNMT1	K4195	Human	Sandwich
E-Cadherin	K4189	Human	Sandwich
EGF	K4022	Human	Sandwich
	K4023	Mouse	Sandwich
	K4024	Rat	Sandwich
EGFR/ErbB1	K4168	Human	Sandwich
Estradiol	K3829	Human	Sandwich
	K3830	Mouse	Sandwich
	K3831	Rat	Sandwich
FGFR2	K4269	Human	Sandwich
GDNF	K4184	Human	Sandwich
GM-CSF	K4772	Human	Sandwich
Growth Hormone	K7412	Human	Sandwich
HDAC2	K4197	Human	Sandwich
HGF	K4781	Human	Sandwich
	K4782	Human (For lysates)	Sandwich
IFN-gamma	K4117	Mouse	Sandwich
IFN- γ	K4773	Human	Sandwich
	K4774	Human (For Lysates)	Sandwich
IGF-1	K4775	Human	Sandwich
IGF-1 sR	K4776	Human	Sandwich
QuickDetect™ IGF-2	K4412	Human	Sandwich
IL-2	K4798	Human	Sandwich
	K4799	Mouse	Sandwich
	K4800	Rat	Sandwich
IL-6	K4143	Human	Sandwich
	K4145	Rat	Sandwich
Lif	K4778	Human	Sandwich

Product Name	Cat. No.	Specificity	Detection Method
LIFR	K4203	Human	Sandwich
MGMT	K4196	Human	Sandwich
MIF	K4786	Human	Sandwich
MIP-1 alpha	K4784	Human	Sandwich
MIP-1 beta	K4785	Human	Sandwich
MTOR	K4179	Human	Sandwich
Nestin	K4191	Human	Sandwich
NFKB1	K4202	Human	Sandwich
Notch-1	K4763	Human	Sandwich
p53	K4829	Human	Sandwich
Phospho-eIF4E (Ser209)	K4212	Human	Sandwich
PTEN	K4193	Human	Sandwich
RBP4	K4911	Human	Competitive
	K4912	Human	Sandwich
	K4913	Mouse, Rat	Sandwich
Sirtuin 1	K4923	Human	Sandwich
Sirtuin 2	K4924	Human	Sandwich
SMAD3	K4200	Human	Sandwich
SOX2	K4199	Human	Sandwich
STAT3	K4201	Human	Sandwich
TERT	K4187	Human	Sandwich
TGF-alpha	K4339	Human	Sandwich
TGF-beta1	K4342	Human	Sandwich
	K4343	Mouse	Sandwich
	K4344	Rat	Sandwich
TNF-alpha	K4779	Human	Sandwich
TNF-beta	K4780	Human	Sandwich
TNFRSF8/CD30 (Human)	K4182	Human	Sandwich
TPO	K4753	Mouse	Sandwich
VCAM-1	K7212	Mouse	Sandwich
β -catenin	K3382	Mouse	Sandwich
	K3381	Human	Sandwich
	K3383	Rat	Sandwich

Please visit www.biovision.com for a comprehensive overview on our products.