

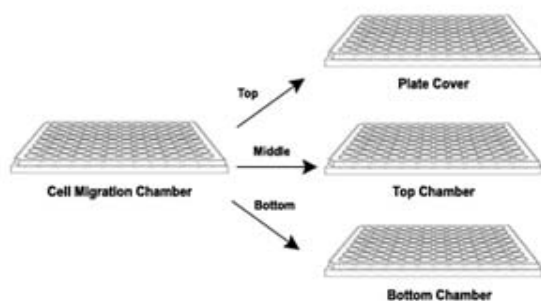
# Cell Migration and Invasion Assay Kits

BioVision offers Easy-to-Use Cell migration/Chemotaxis and Invasion Assay kits that are adaptable to high-Throughput systems. These assays utilize a Boyden Chamber. Cells migrate through a semi-permeable membrane (Cell Migration Assays) and invade the matrix, and then migrate through a semi-permeable membrane (Cell Invasion Assays) in response to stimulatory or inhibitory compounds. Cell Migration/Invasion can be analyzed directly by reading fluorescence in a plate reader.

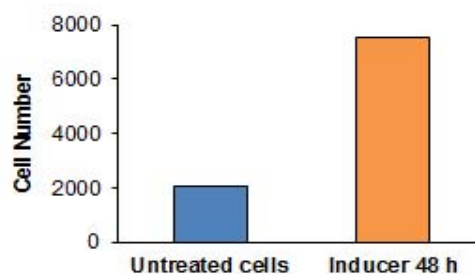
## Key Features:

- **Non-radioactive**, homogeneous assays
- **Sensitive, High Throughput Screening compatible**
- **Fluorometric detection** (Ex/Em= 530/590 nm)
- **Convenient:** simple, fast protocols (1-2 hours )
- **Cost effective:** 12/100 assays;
- **Validated:** using mammalian invasive cell lines

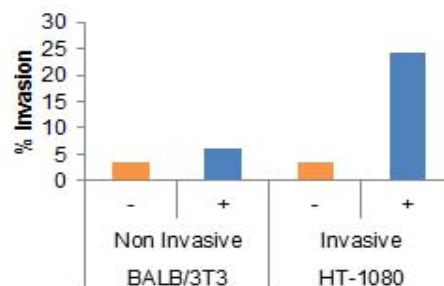
A)



B)



C)



**A) Cell Migration/Invasion plates:** The cells are added to the Top Chamber and the Control Migration/Invasion Inducer or chemoattractant are added to the Bottom Chamber. **B) Cell Migration (3  $\mu$ m-pore) using K908:** Erythroleukemia cells were starved overnight and treated with Control Migration Inducer for 48 h or left untreated (control cells). Treatment with Control Migration Inducer demonstrated a significant increase in migration as compared to untreated cells. **C) Cell Invasion (8  $\mu$ m-pore, Collagen I coating) using K916:** NIH-3T3 and HT-1080 cells were starved overnight and treated with Control (Cnt) Invasion invasion of HT 1080 cells as compared to NIH-3T3 control cells.

In ITALIA please contact: Vinci-Biochem - Tel +39 0571 568 147 - vb@vincibiochem.it - www.vincibiochem.it

155 S. Milipitas Blvd, Milipitas, CA 95035

T: 408-493-1800 F: 408-493-1801

Toll Free: 800-891-9699 (US Only)

**BioVision**  
BioVision Incorporated



Cell Migration/Chemotaxis Assay Kits (Ex/Em= 530/590)			
	Plate Format	No. Assays	Coating
No Coating	24-well	12	8
	96-well	100	
	24-well	12	5
	96-well	100	
	24-well	12	3
	96-well	100	

Cell Invasion Assay Kits (Ex/Em= 530/590)			
	Plate Format	No. Assays	Coating
Pore Size: 8 µm	24-well	12	ECM
	96-well	100	
	24-well	12	Collagen I
	96-well	100	
	24-well	12	Collagen IV
	96-well	100	
	24-well	12	Laminin
	96-well	100	

Cell Type	Cell Migration/Chemotaxis			Invasion
	3 µm	5 µm	8 µm	8 µm
Invasive and Non-invasive breast cancer cell lines (human): MDA-MB-231, MCF7	-	+	+	+
Invasive fibrosarcoma cell line (human): HT1080	-	+	+	+
Non-Invasive fibroblast cell line (mouse): NIH3T3	-	+	+	+
Endothelial cells: HUVEC	+	+	+	+
Endothelial cells: HMVEC/HMEC	-	+	+	+
Myofibroblast: Hepatic Stellate	-	+	-	N/A
Leukocytes, Neutrophils	+	-	-	-
Lymphocytes, Macrophages, Monocytes	-	+	-	-
Epithelial cell, fibroblasts	-	-	+	-

N/A: Information Not Available

**The simplest, yet sensitive series of assays in the market!!!!**

**Visit [www.biovision.com](http://www.biovision.com) for a comprehensive overview on these and other cell-based assay products!**

In ITALIA please contact: Vinci-Biochem - Tel +39 0571 568 147 - vb@vincibiochem.it - www.vincibiochem.it